

Absolute Strategy Research



High Frequency Data: Monitoring the Recovery from Covid-19

Americas, Europe, Asia Pacific, and Global

25/09/2020

Americas

Chart AM1: Cumulative Cases [Source: WHO]

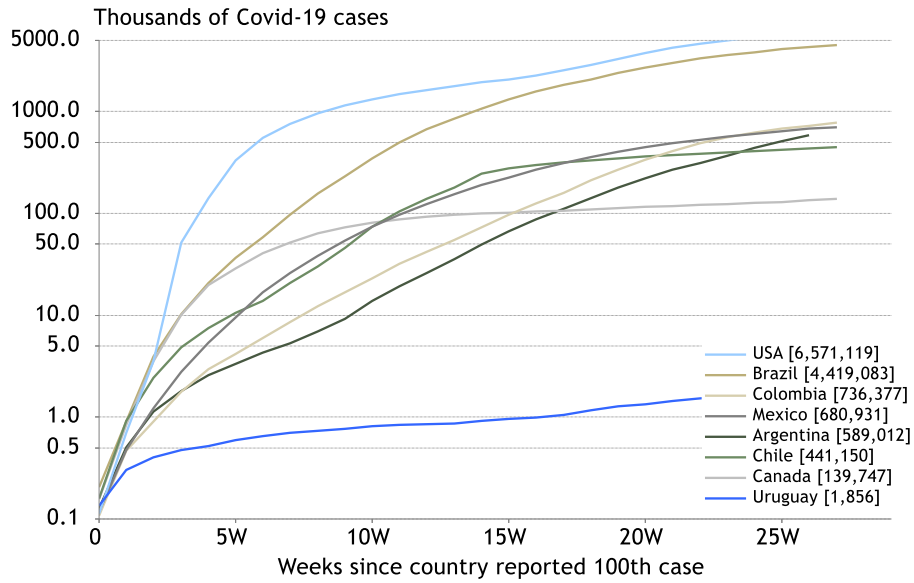


Chart AM2: Active vs Recovered vs Deaths [Source: Reuters]

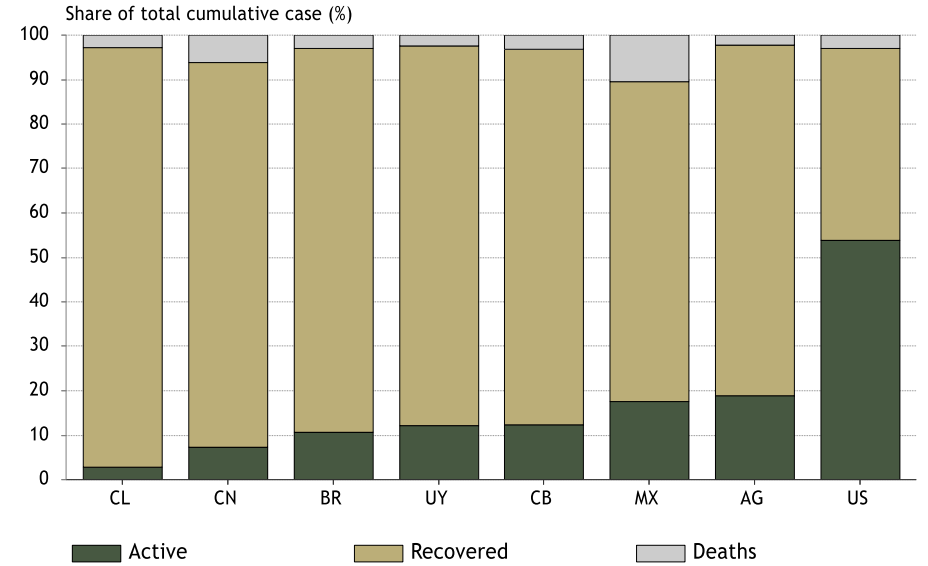


Chart AM3: Apple Mobility Data (Time Series) [Source: Apple]

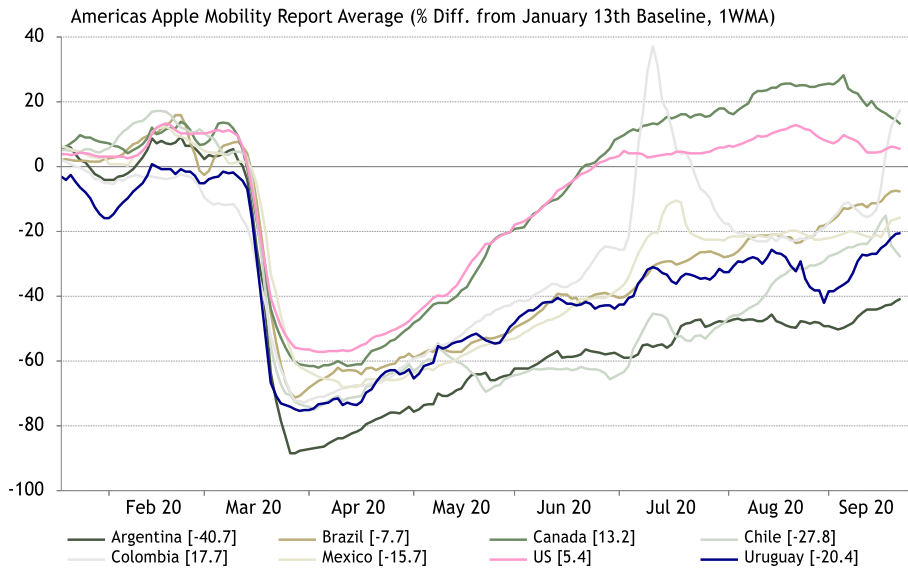
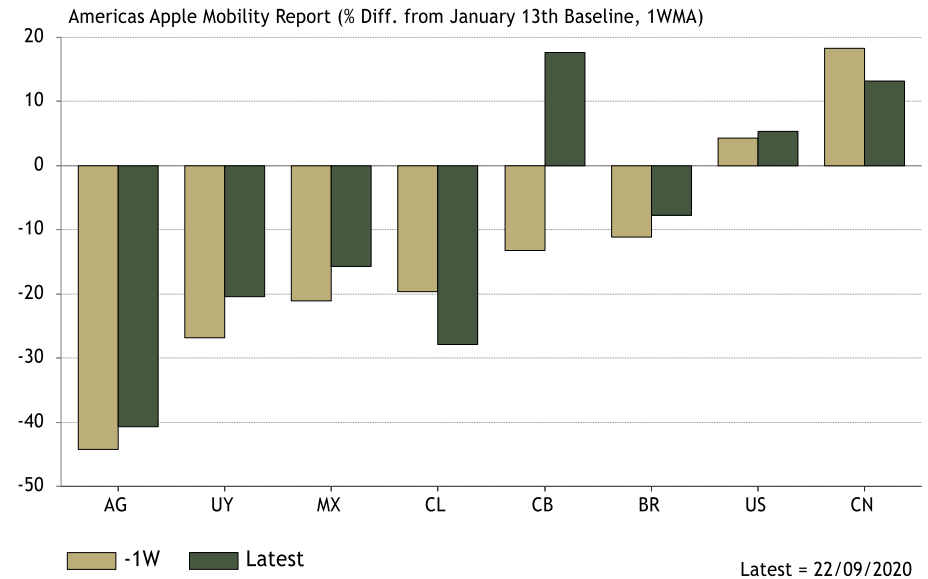


Chart AM4: Apple Mobility Data (Last Week vs Now) [Source: Apple]



Americas

Chart AM5: Google Mobility Data [Source: Google]

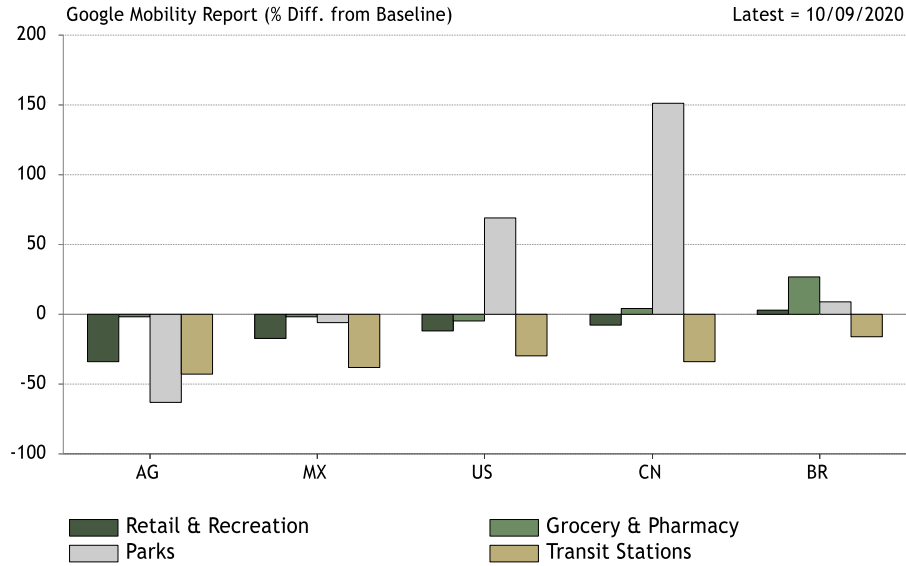


Chart AM6: OpenTable Restaurant Reservations [Source: OpenTable]

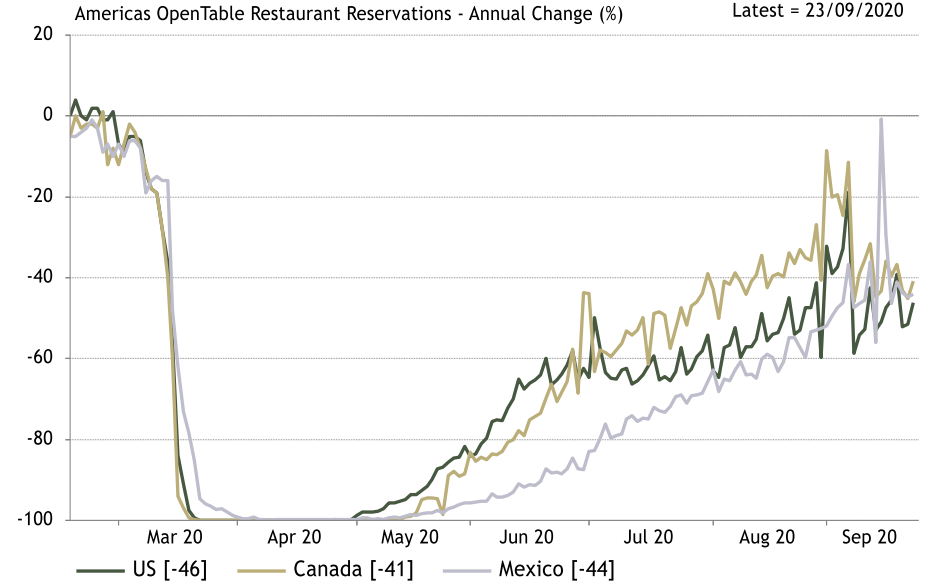


Chart AM7: Box Office Revenues [Source: BoxOfficeMojo]

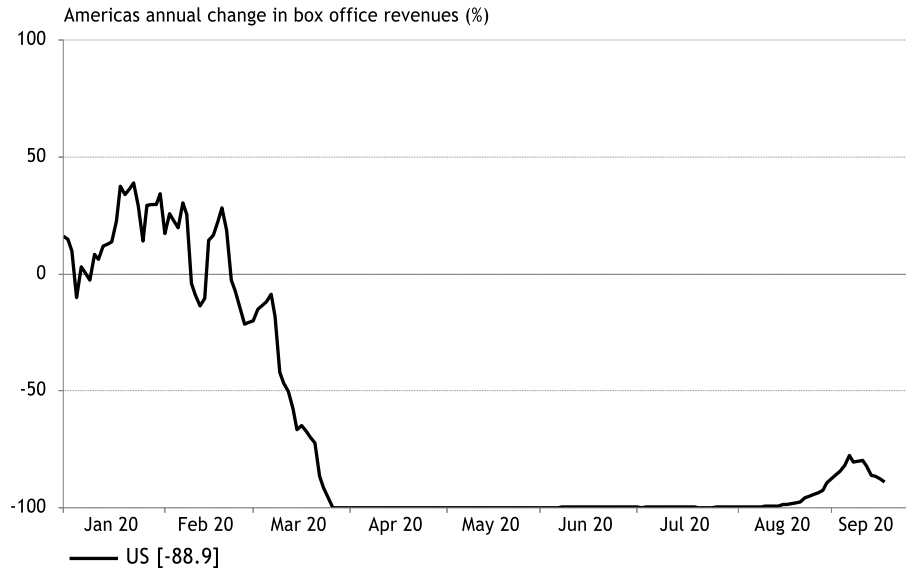
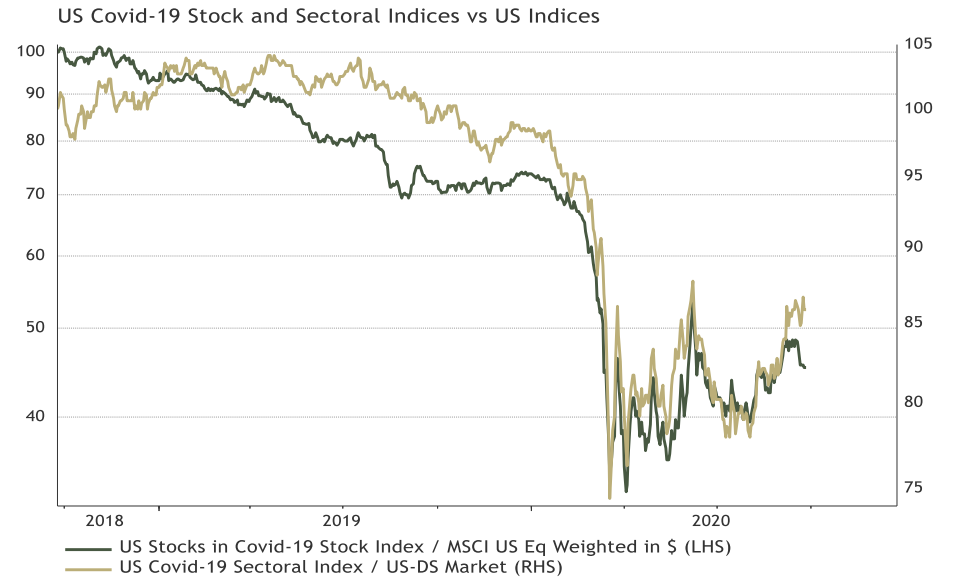


Chart AM8: ASR's Covid-19 Stock and Sectoral Indices [Source: Refinitiv, ASR]



Americas

Chart AM9: CityMapper Data (Time Series) [Source: CityMapper]

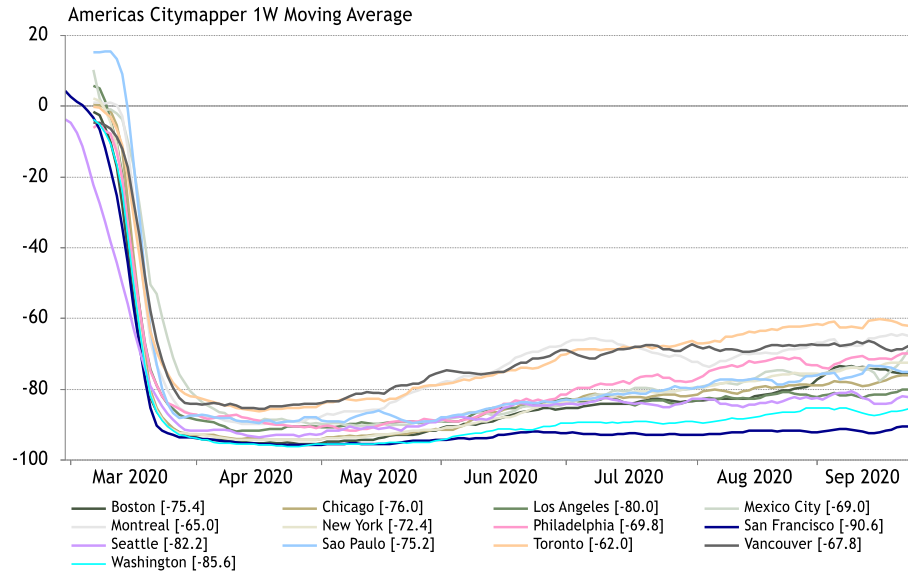


Chart AM10: Citymapper Data (Last Week vs Now) [Source: CityMapper]

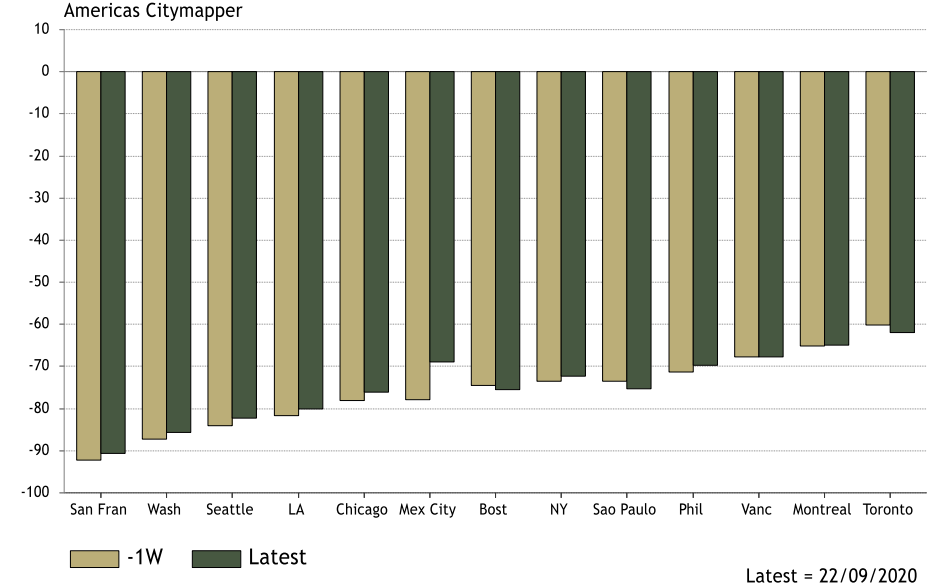


Chart AM11: NY Fed Weekly Index [Source: LibertyStreetEconomics]

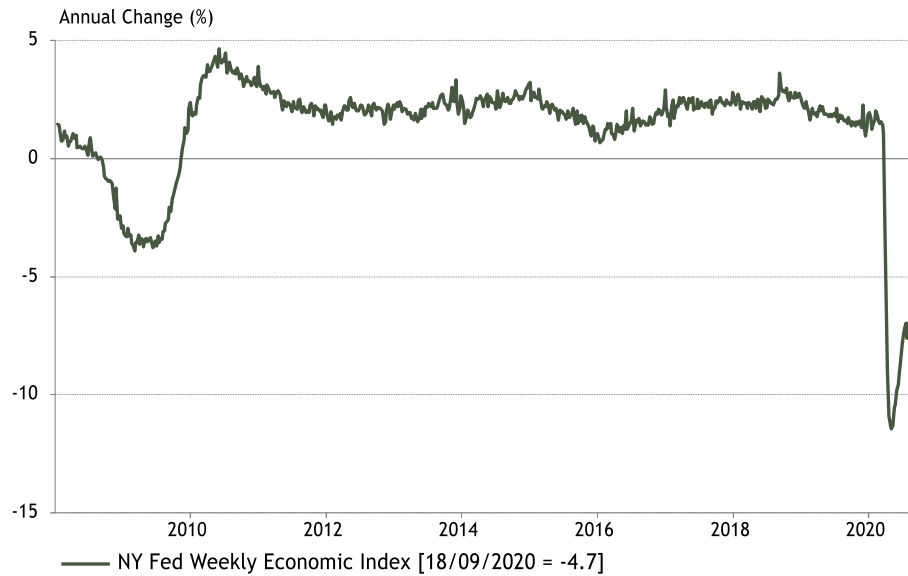
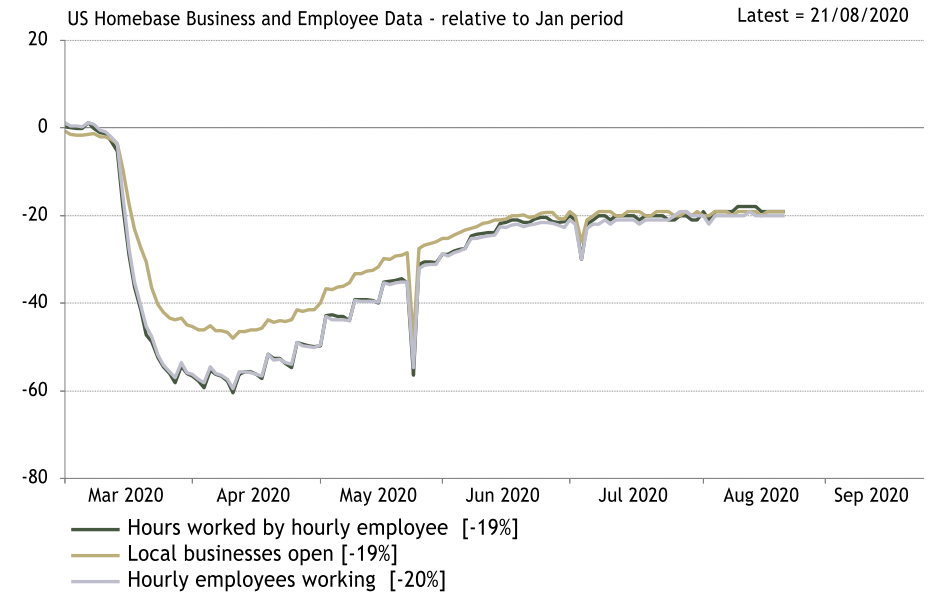


Chart AM12: Homebase Hours Worked [Source: joinhomebase.com]



Americas

Chart AM13: TSA Passenger Numbers [Source: tsa.gov]

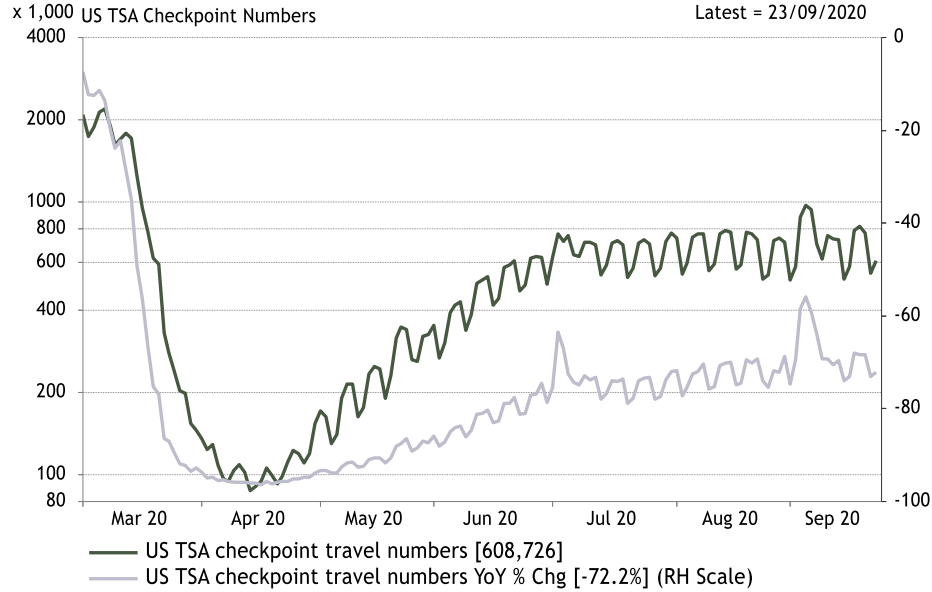


Chart AM14: Flightradar24 Flight Data [Source: FlightRadar24.com]

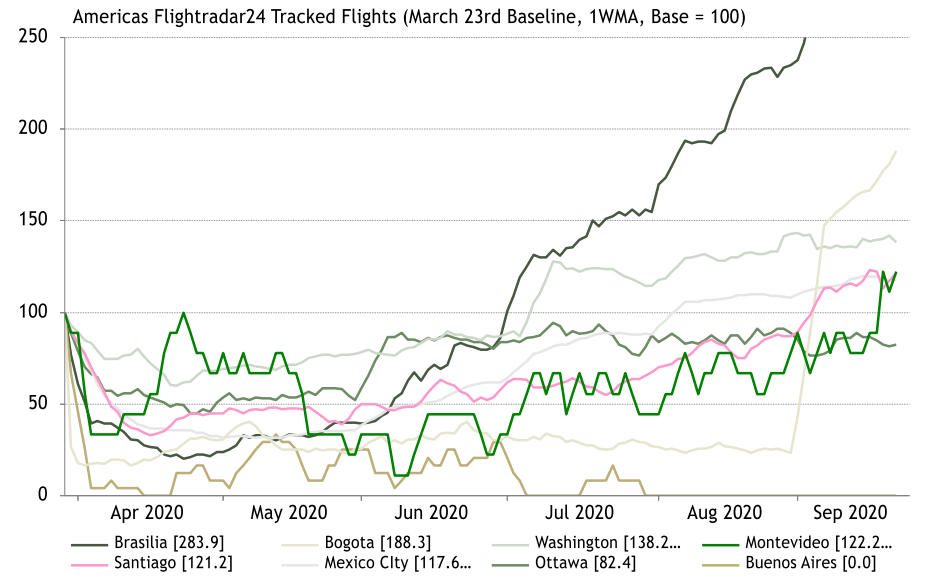
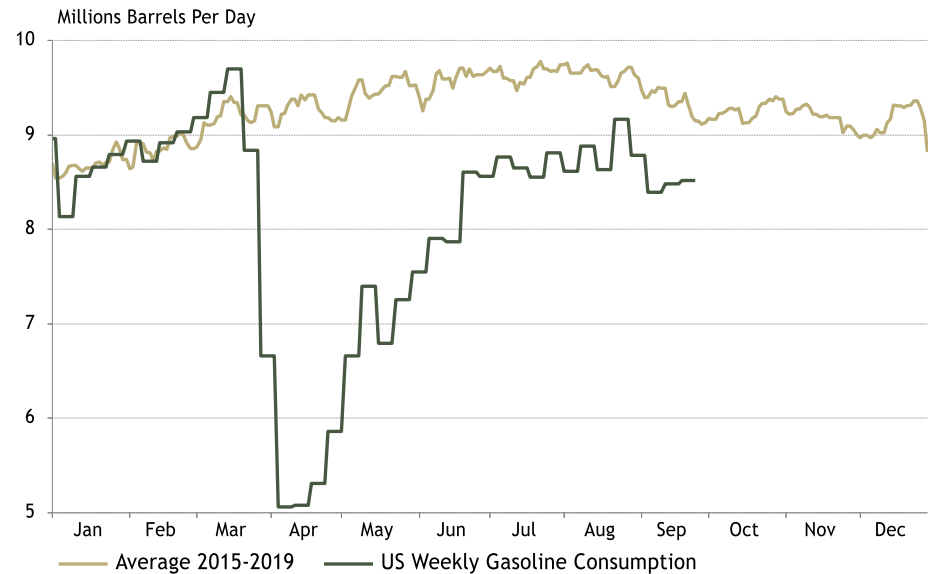


Chart AM15: Railroad Traffic [Source: Refinitiv]



Chart AM16: US Weekly Gasoline Consumption [Source: Refinitiv, EIA]



Americas

Chart AM17: US Weekly Gasoline Inventory [Source: Refinitiv, EIA]

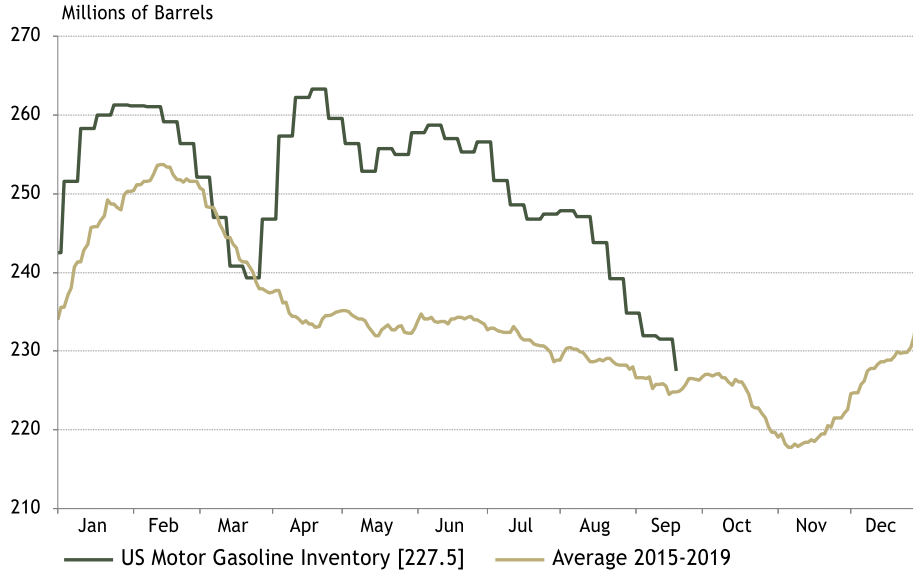


Chart AM18: Indeed Job Postings [Source: Indeed]

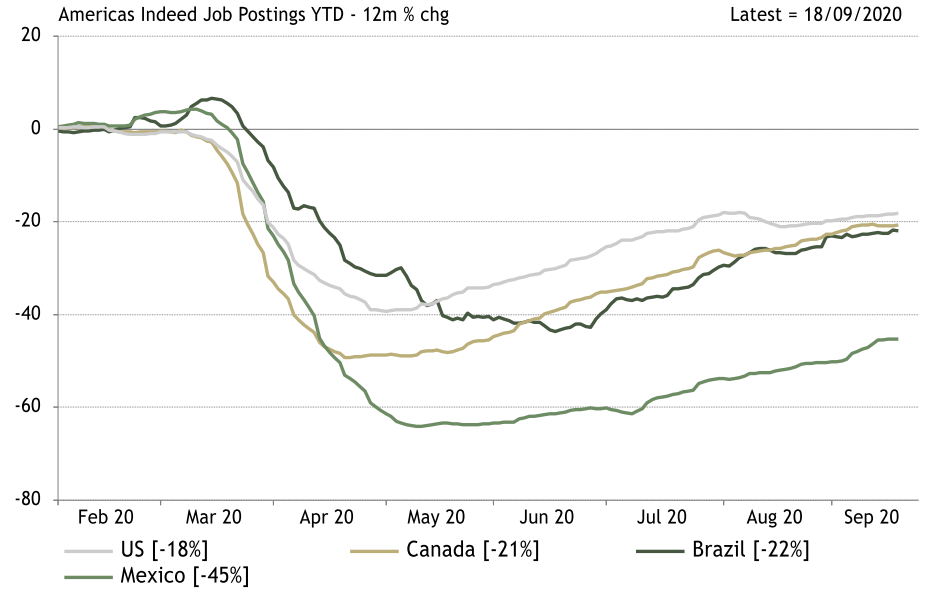


Chart AM19: Google Trends Consumer Search [Source: Google]

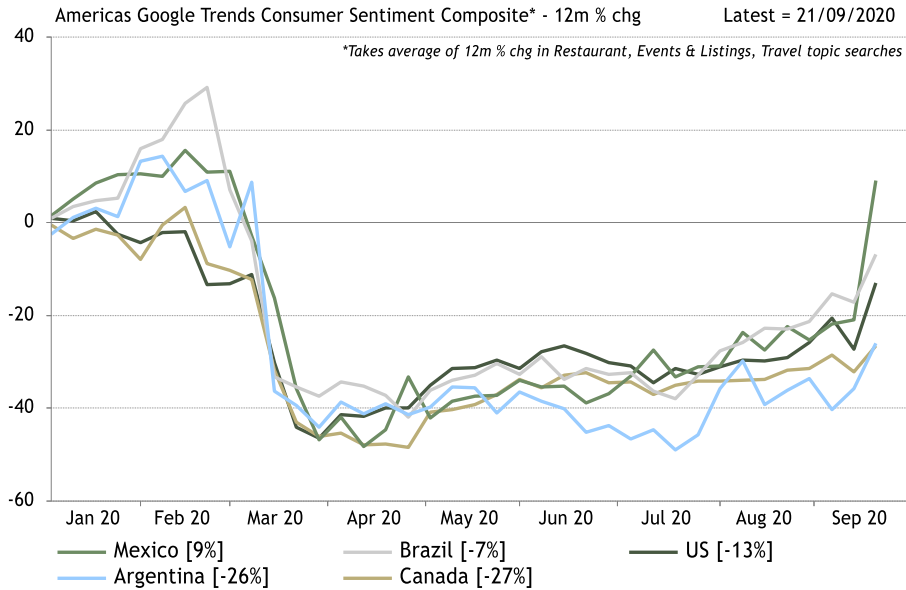
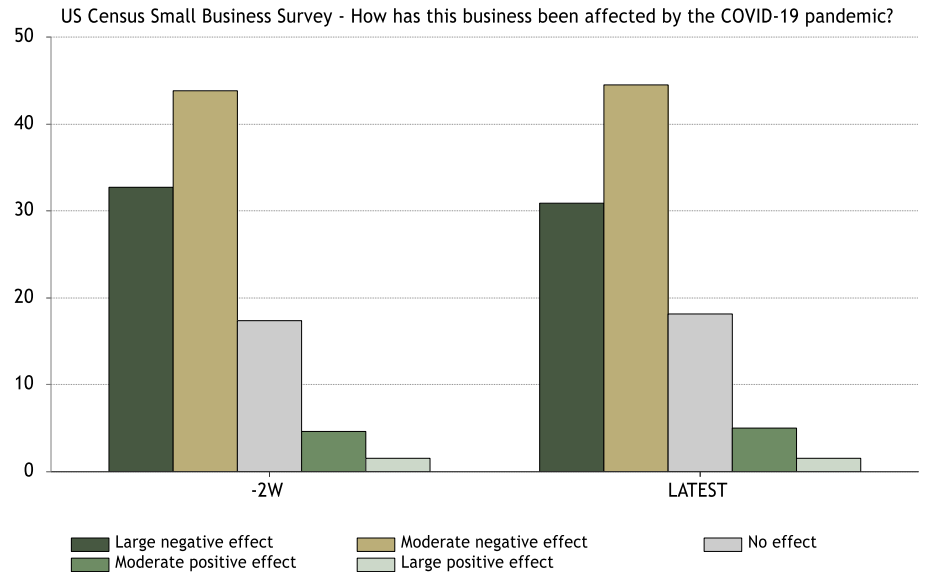


Chart AM20: Small Business Survey - Overall Verdict [Source: US Census]



Americas

Chart AM21: Small Business Survey - Cash [Source: US Census]

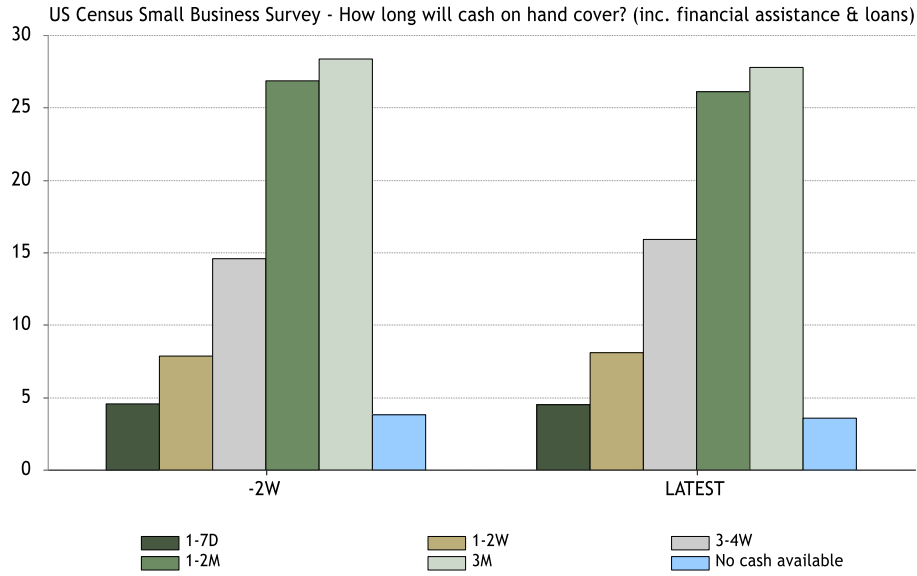


Chart AM22: Small Business Survey - Operation Resumption [Source: US Census]

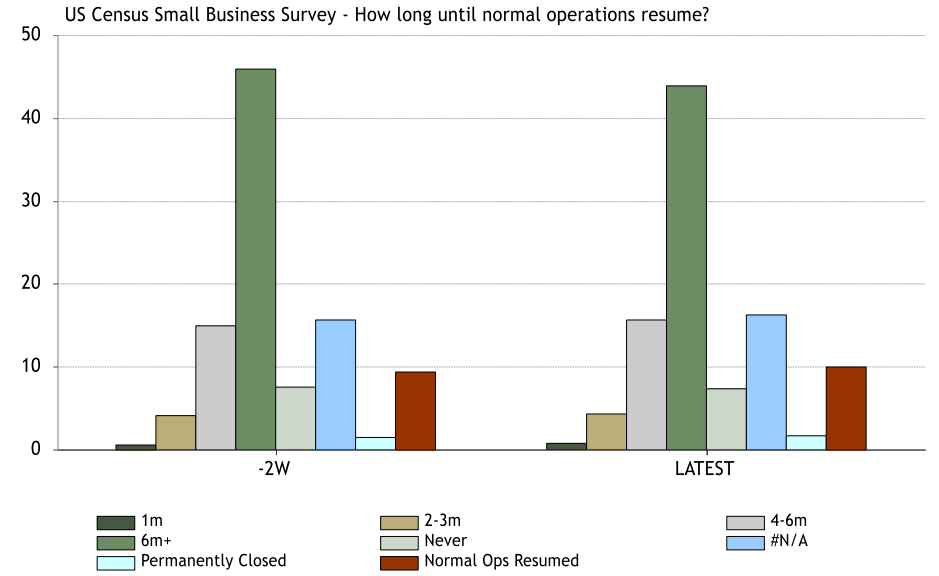


Chart AM23: Hotel Occupancy Rate [Source: Hotel News Now]

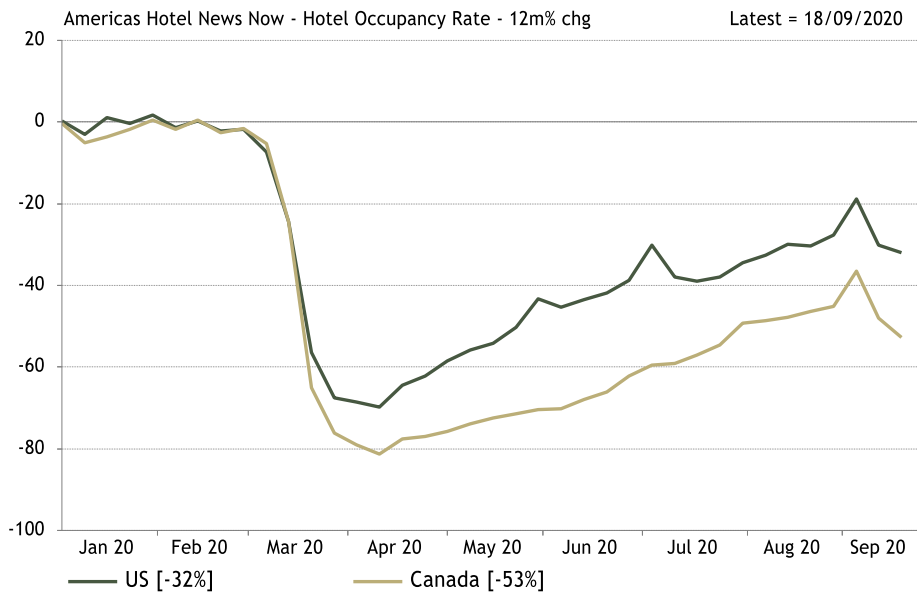
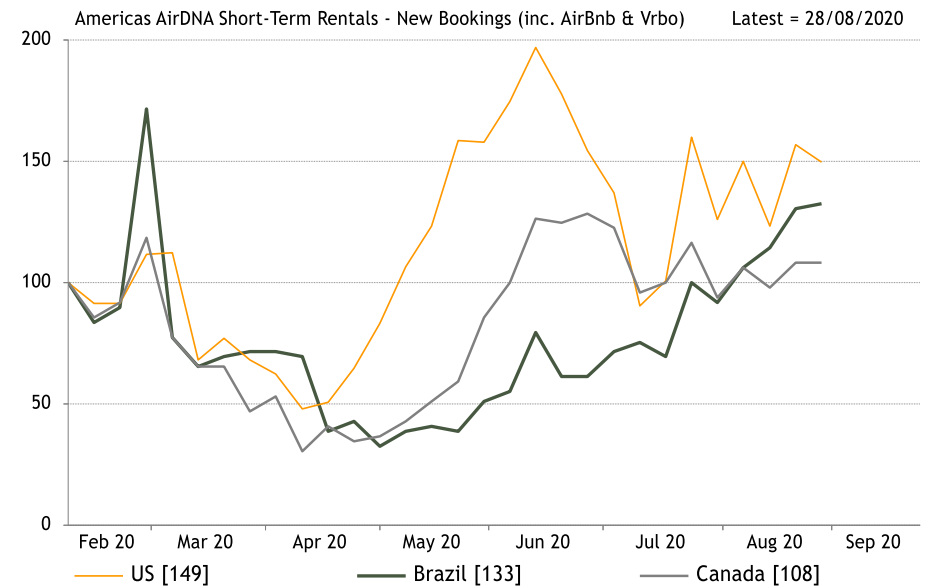


Chart AM24: Short-Term Rentals - New Bookings [Source: AirDNA]



Americas

Chart AM25: US Economic Mobility Index [Source: NinthDecimal]

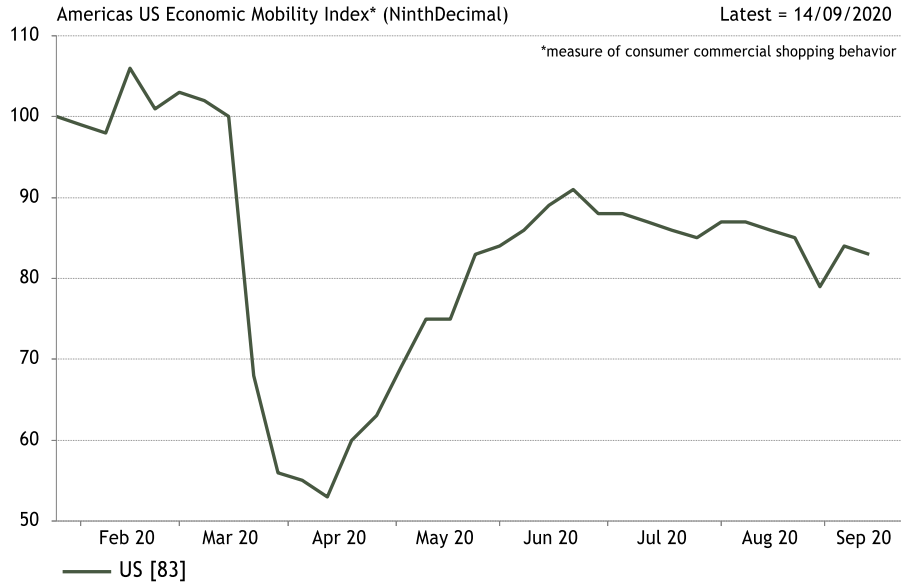


Chart AM26: US Local Restaurant & Bars Spending [Source: Womply]

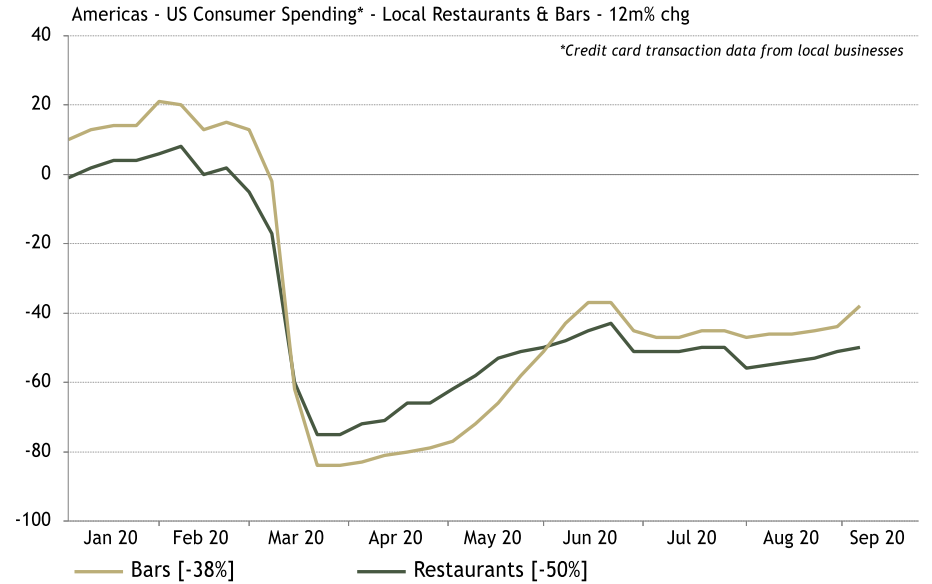


Chart AM27: Cleveland Fed Consumer Survey [Source: Cleveland Fed]

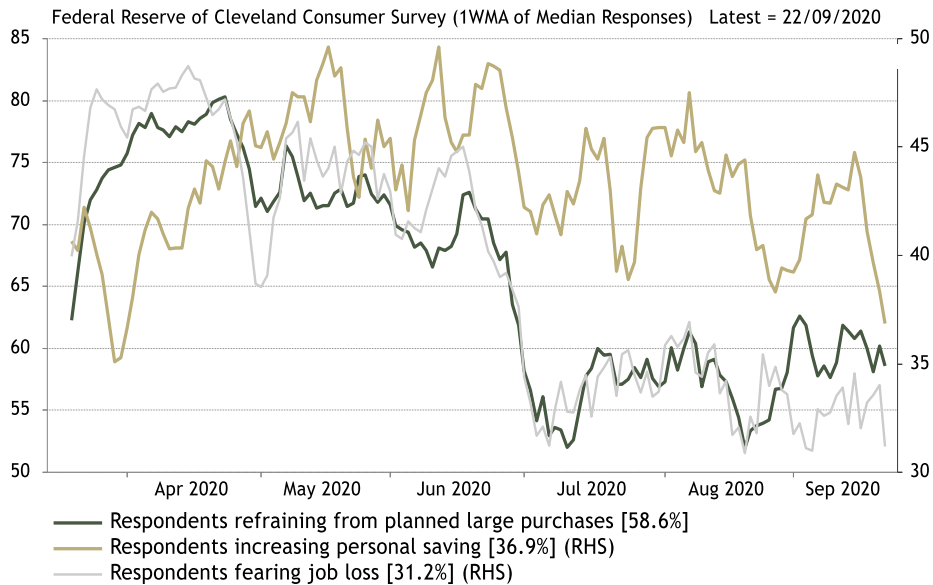
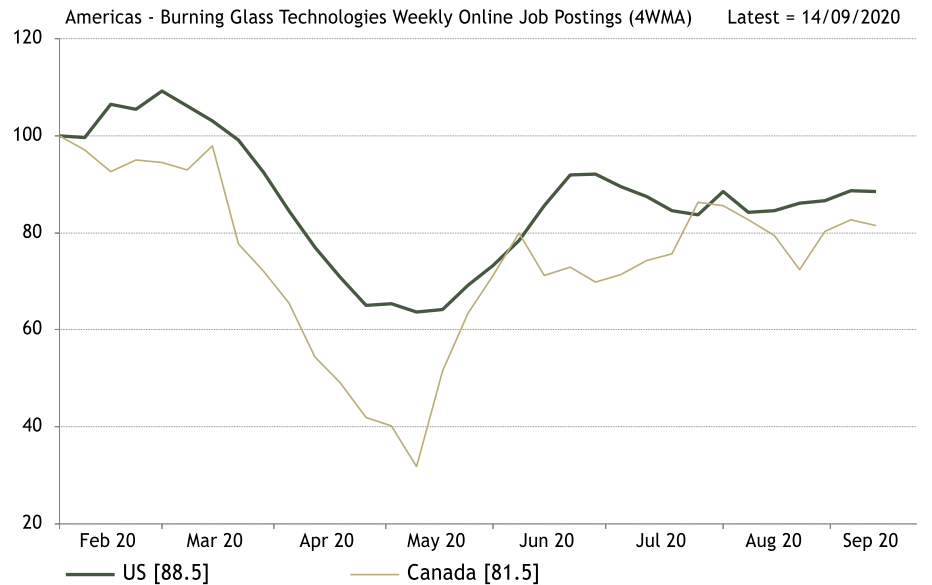


Chart AM28: Online Job Postings [Source: Burning Glass Technologies]



Americas

Chart AM29: US Small Business Revenues [Source: Womply]

Americas - US Small Business Daily Revenues - Change vs January 2020

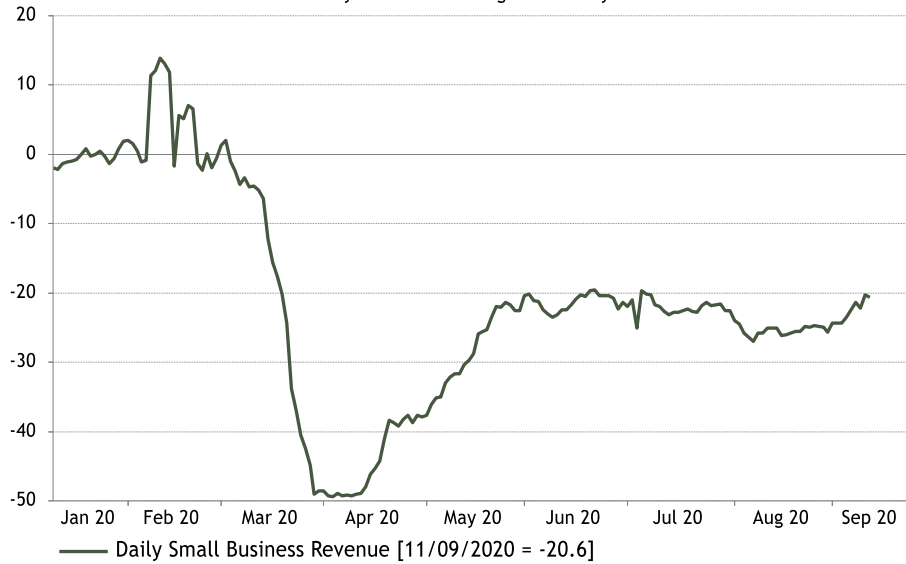


Chart AM30: Credit Card Spending by Sector [Source: Affinity Solutions]

Americas - Affinity Solutions US Credit Card Spending by Sector relative to 31 Jan 2020 (7DMA)

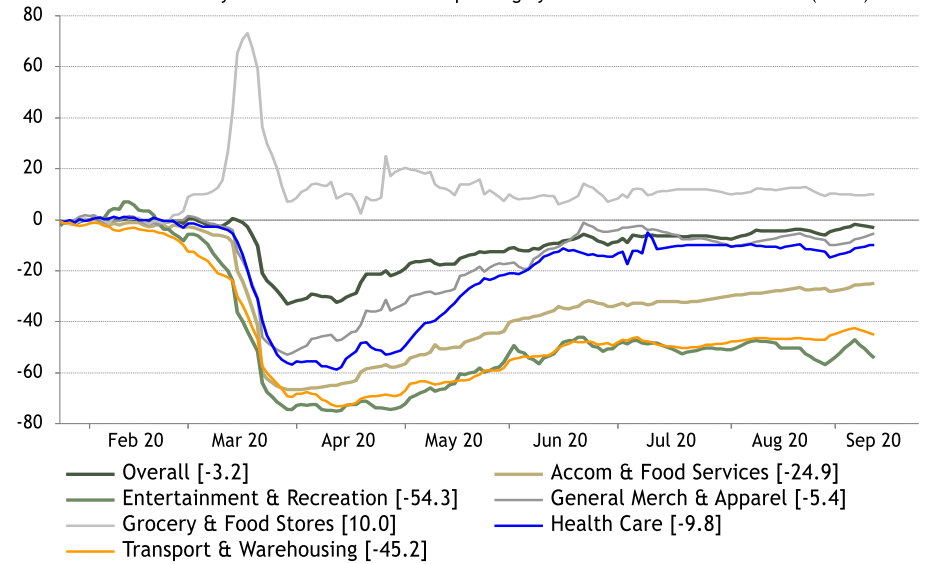


Chart AM31: Credit Card Spending by Area [Source: Affinity Solutions]

Americas - Affinity Solutions US Credit Card Spending by Area relative to 31 Jan 2020 (7DMA)

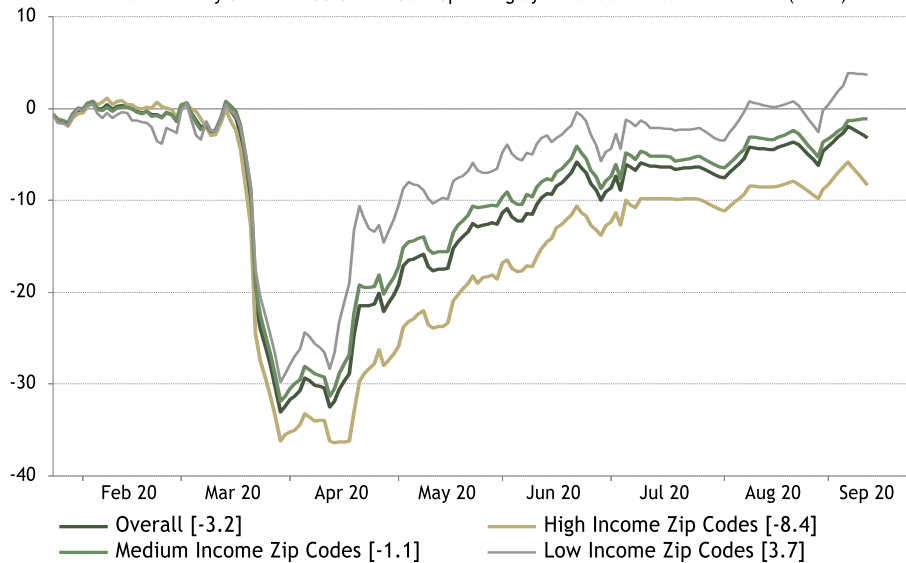
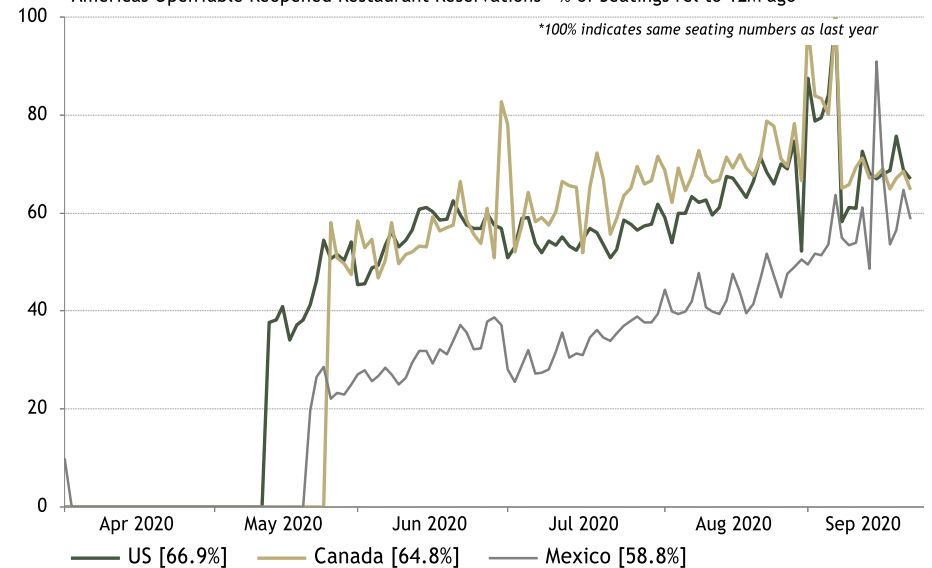


Chart AM32: OpenTable Reopened Restaurants [Source: OpenTable]

Americas OpenTable Reopened Restaurant Reservations - % of Seatings rel to 12M ago*



Americas

Chart AM33: Public Transport Usage [Source: www.moovit.com]

Americas Moovit Public Transit Usage relative to week before Jan 15

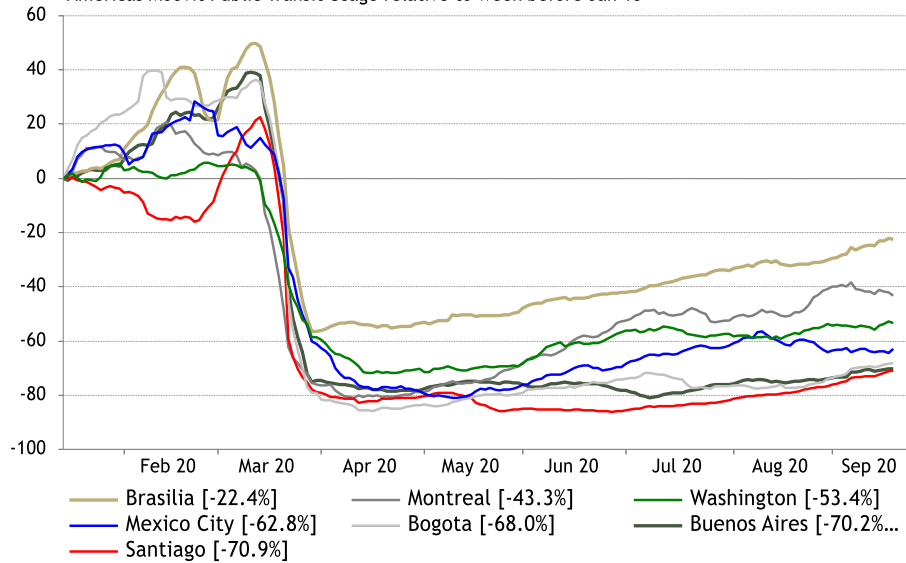


Chart AM34: Flight Search Demand [Source: Skyscanner]

Americas Skyscanner Flight Search Demand - YoY % Change (1WMA)

Latest = 18/09/2020

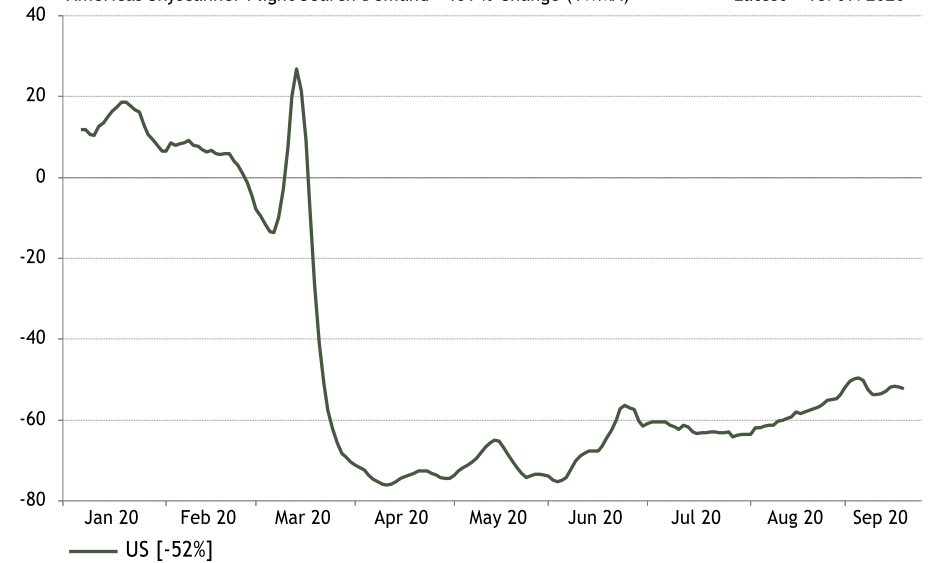


Chart AM35: Toll Road Traffic [Source: Atlantia]

Americas Atlantia Toll Road Traffic - YoY % Change

Latest = 18/09/2020

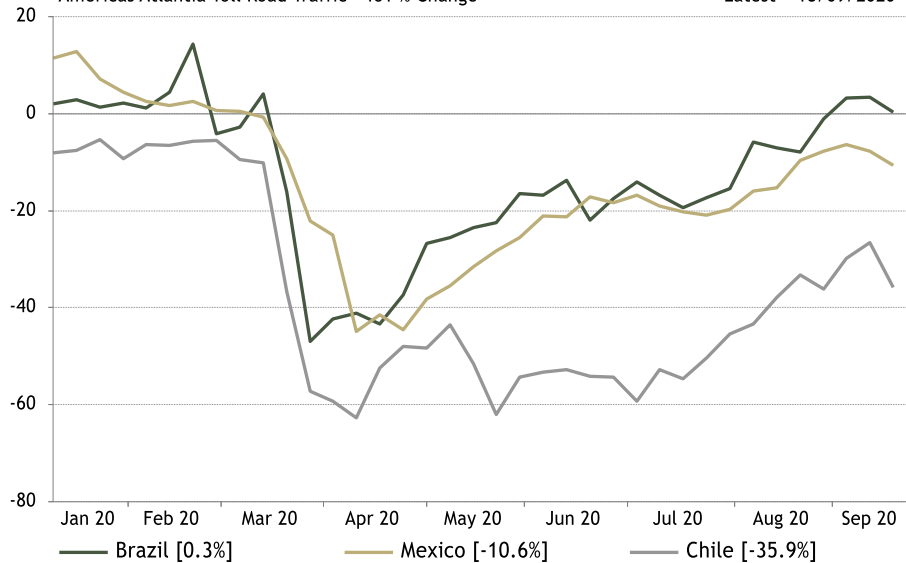


Chart AM36: Consumer Confidence [Source: Morning Consult]

Americas Morning Consult Weekly US Consumer Confidence

Latest = 21/09/2020

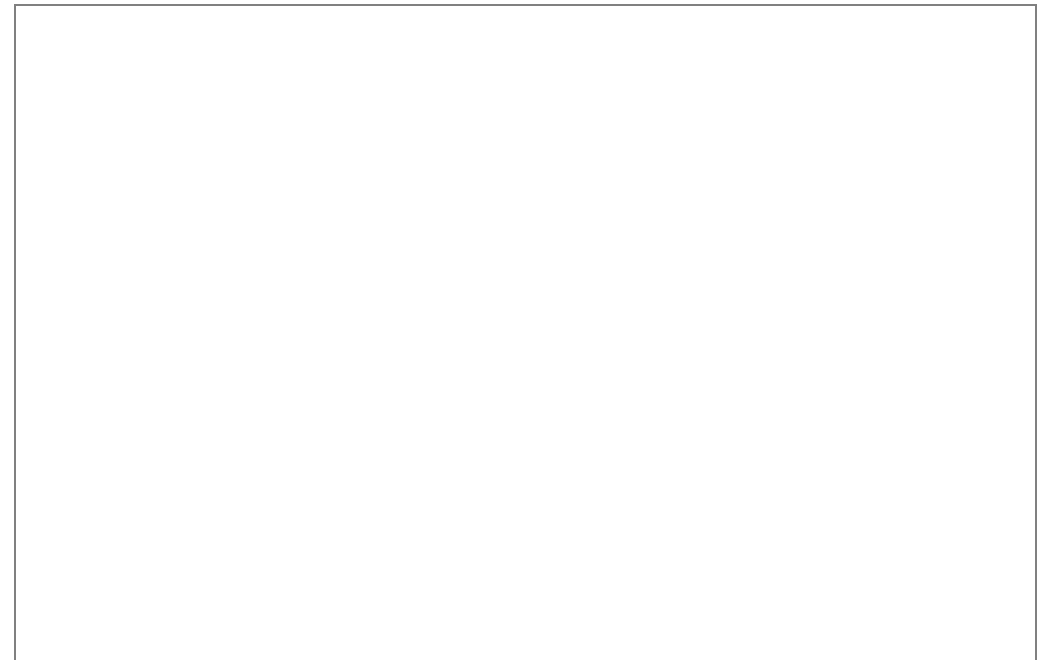
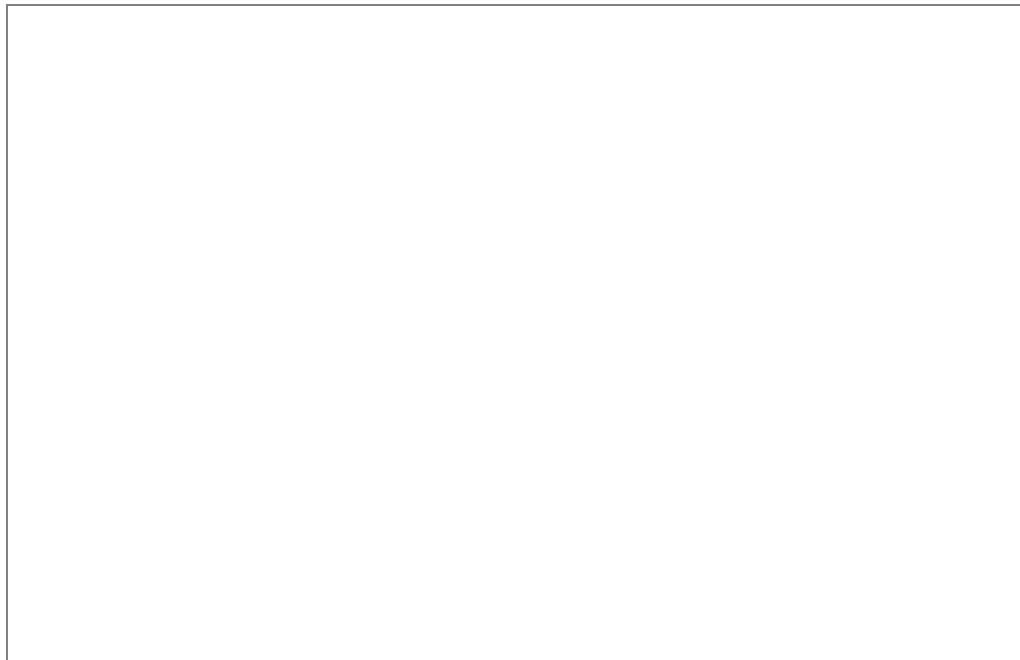
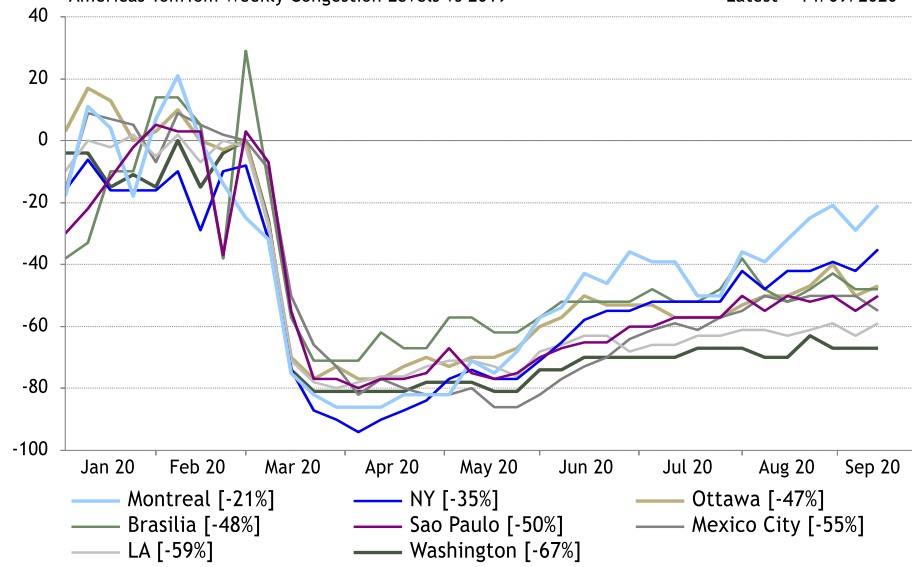


Americas

Chart AM37: Traffic Congestion Levels [Source: TomTom]

Americas TomTom Weekly Congestion Levels vs 2019

Latest = 14/09/2020



Europe

Chart EU1: Cumulative Cases [Source: WHO]

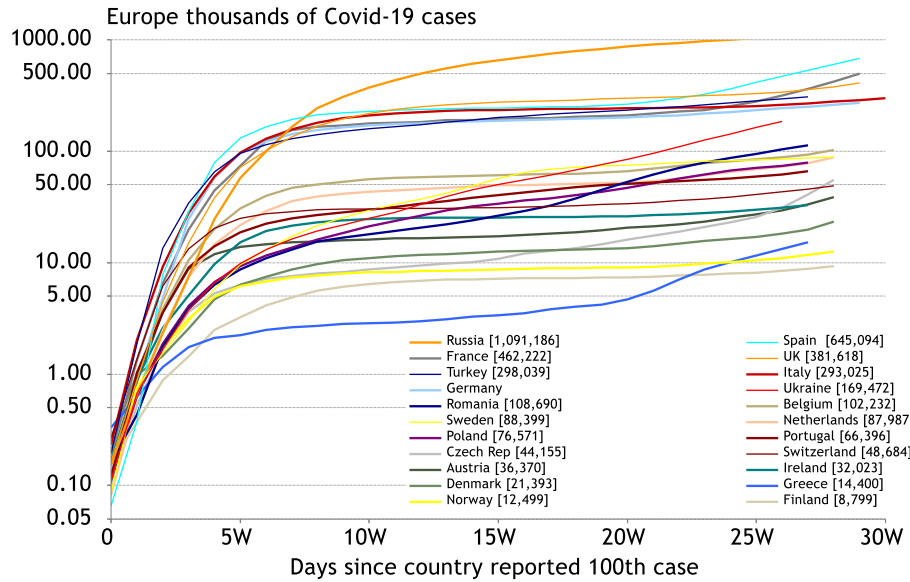


Chart EU2: Active vs Recovered vs Deaths [Source: Reuters]

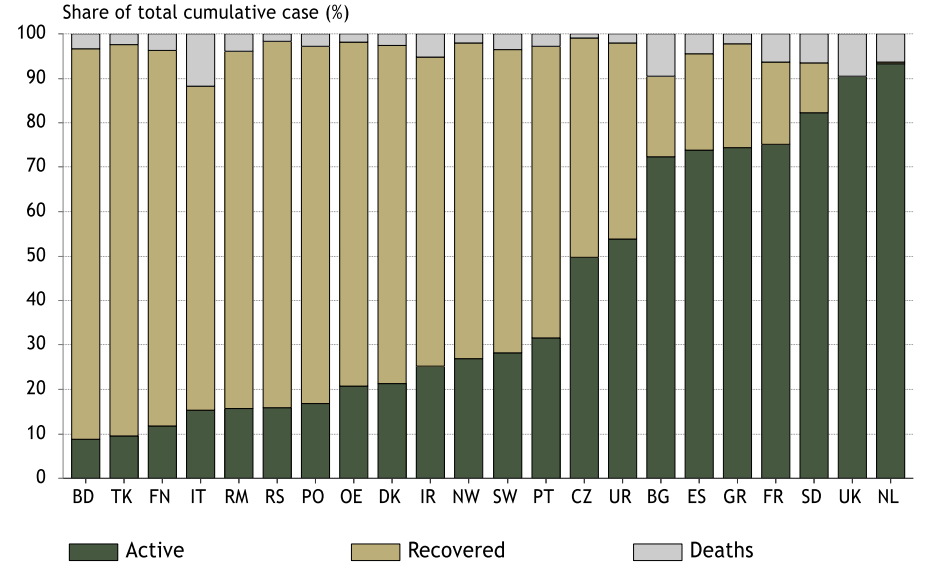


Chart EU3: Apple Mobility Data (Time Series) [Source: Apple]

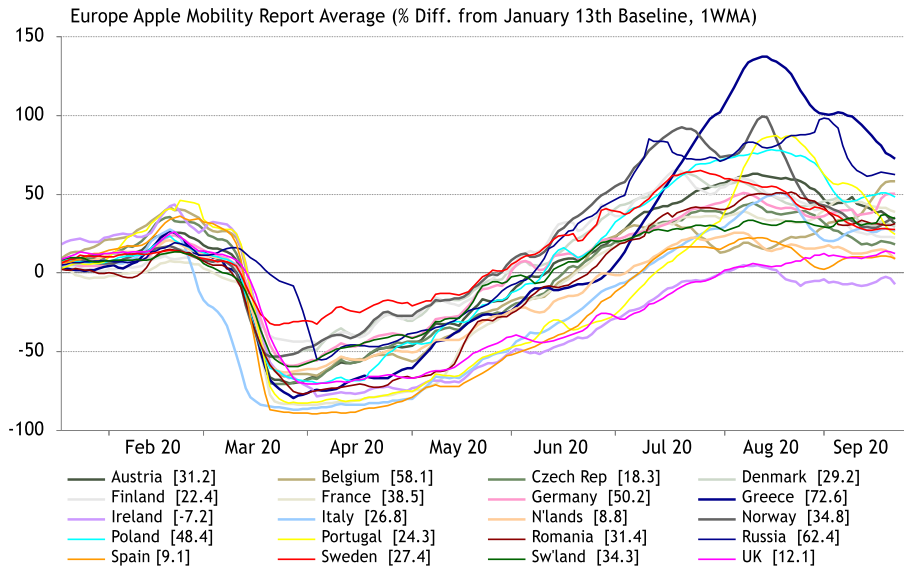
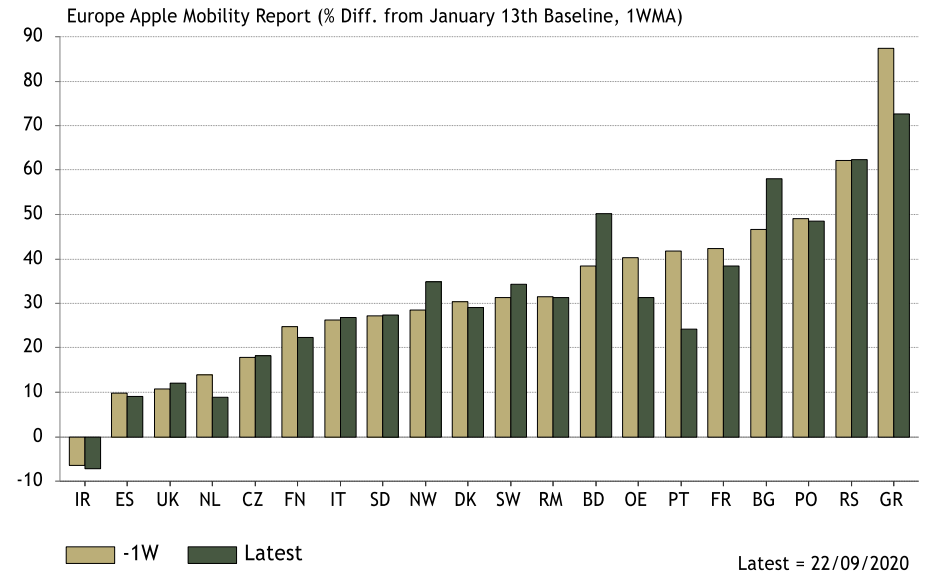


Chart EU4: Apple Mobility Data (Last Week vs Now) [Source: Apple]



Europe

Chart EU5: Google Mobility Data [Source: Google]

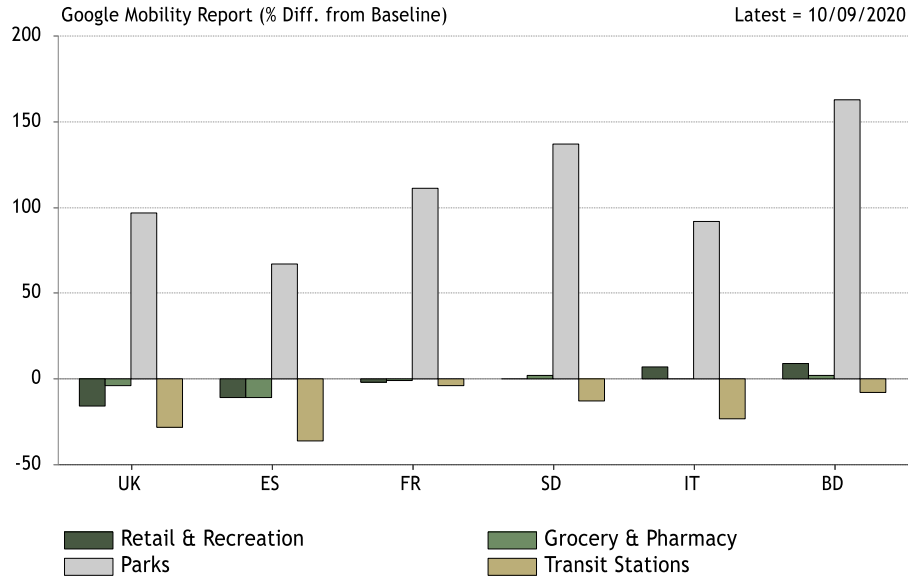


Chart EU6: OpenTable Restaurant Reservations [Source: OpenTable]

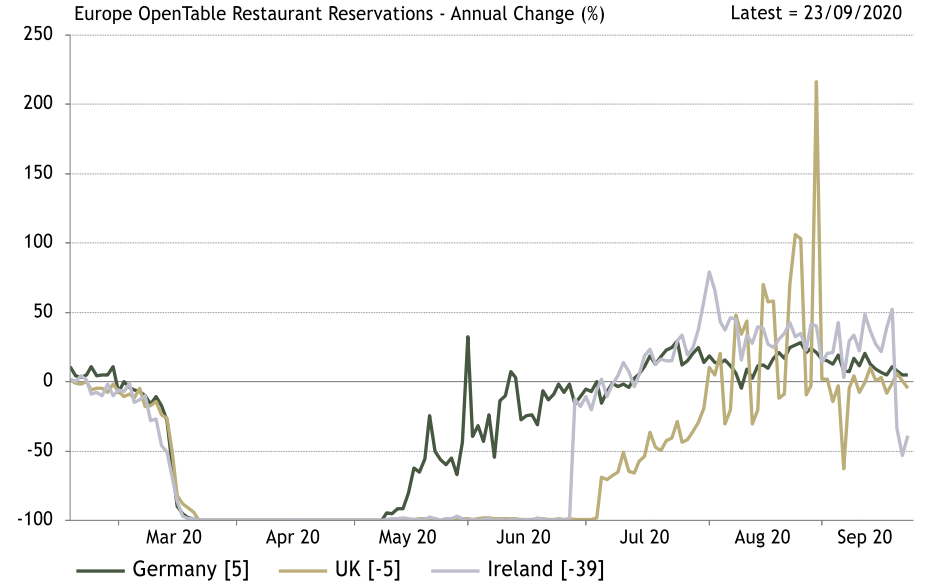


Chart EU7: Box Office Revenues [Source: BoxOfficeMojo]

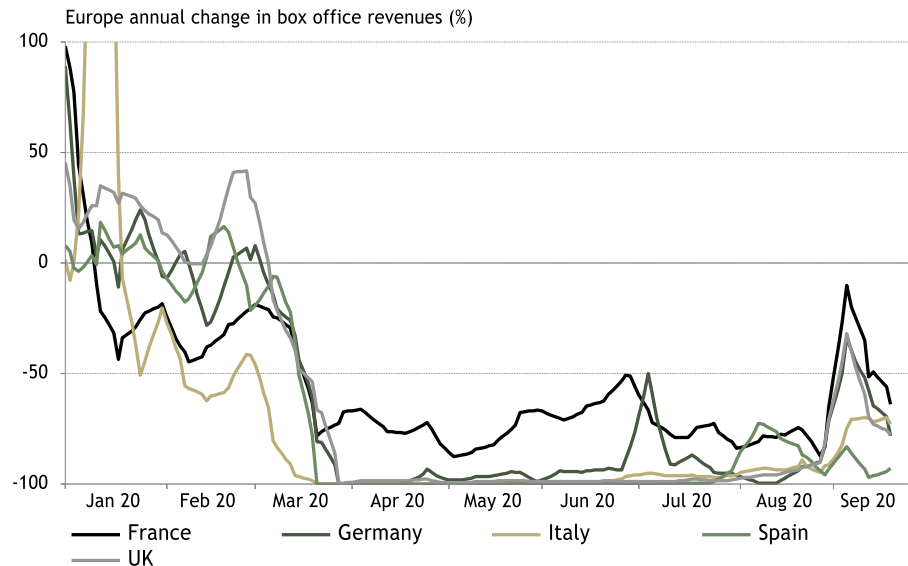
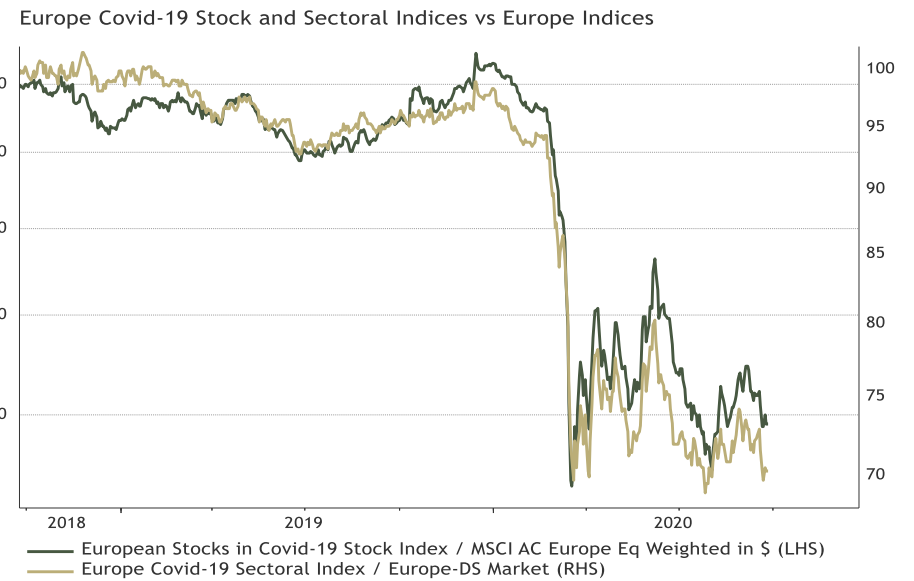


Chart EU8: ASR's Covid-19 Stock and Sectoral Indices [Source: Refinitiv, ASR]



Europe

Chart EU9: Citymapper Data (Time Series) [Source: CityMapper]

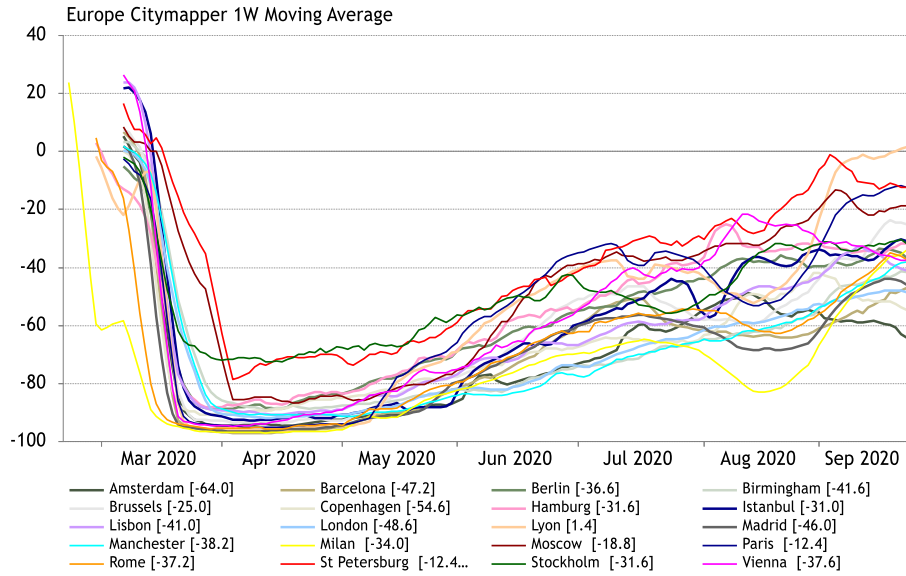


Chart EU10: Citymapper Data (Last Week vs Now) [Source: CityMapper]

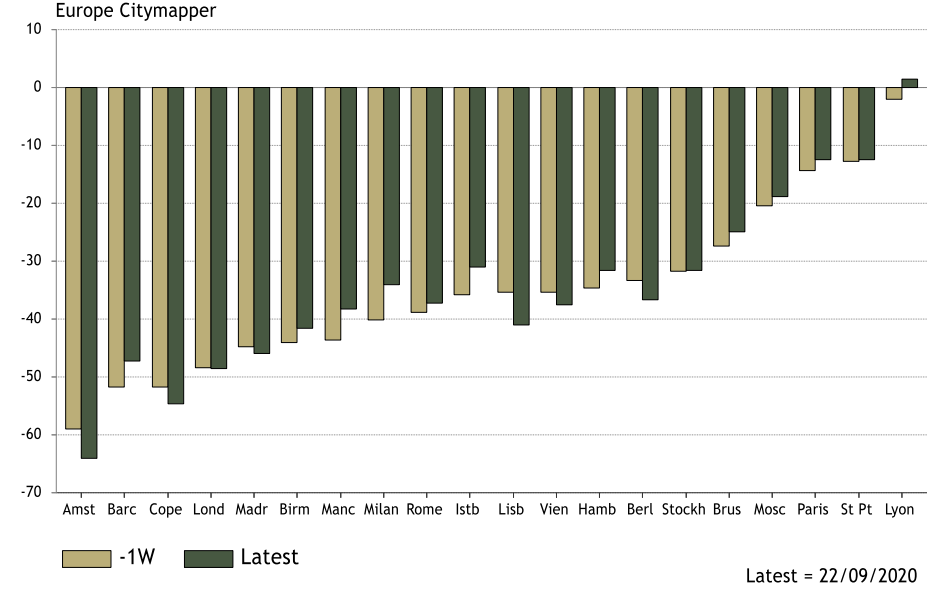


Chart EU11: Flightradar24 Flight Data [Source: FlightRadar24.com]

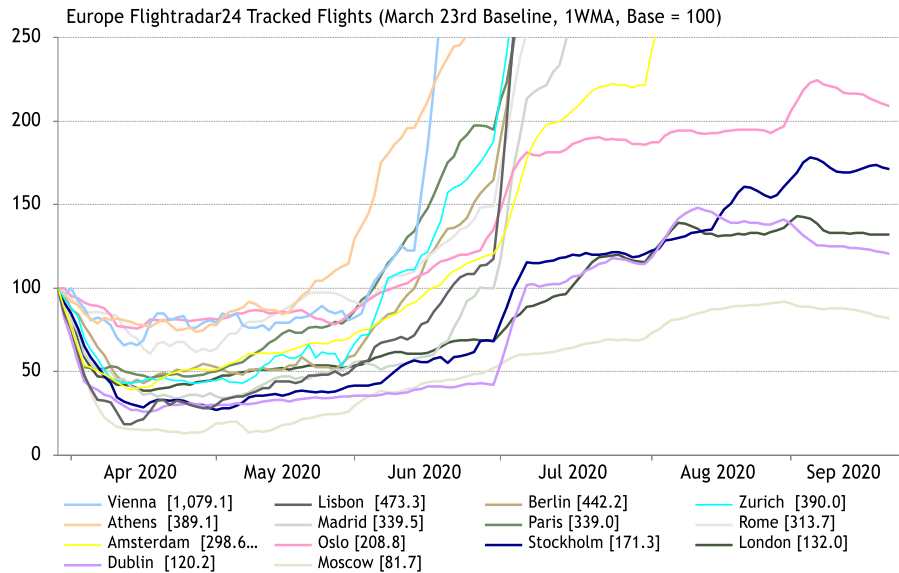
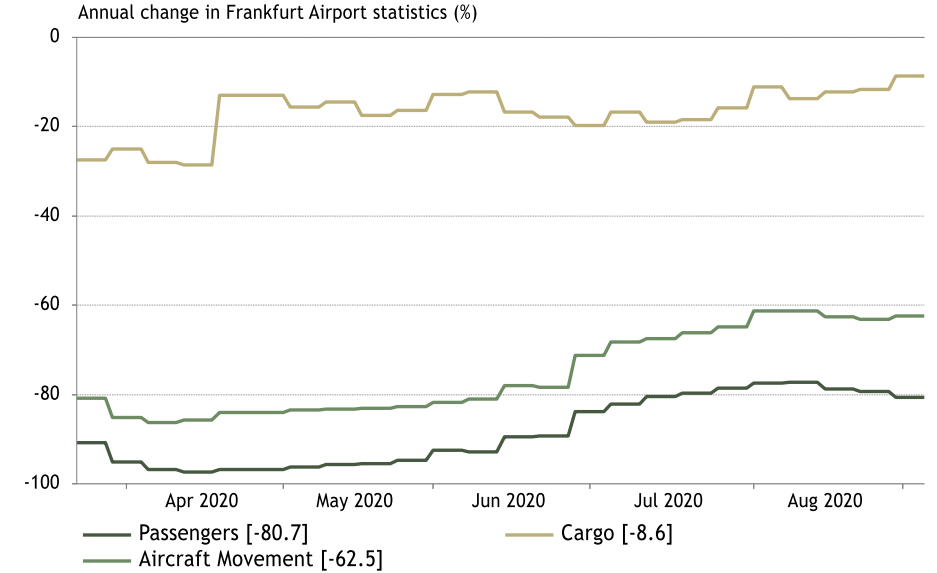


Chart EU12: Frankfurt Airport Weekly Data [Source: Frankfurt Airport]



Europe

Chart EU13: Electricity Consumption [Source: SMARD, TERNA]

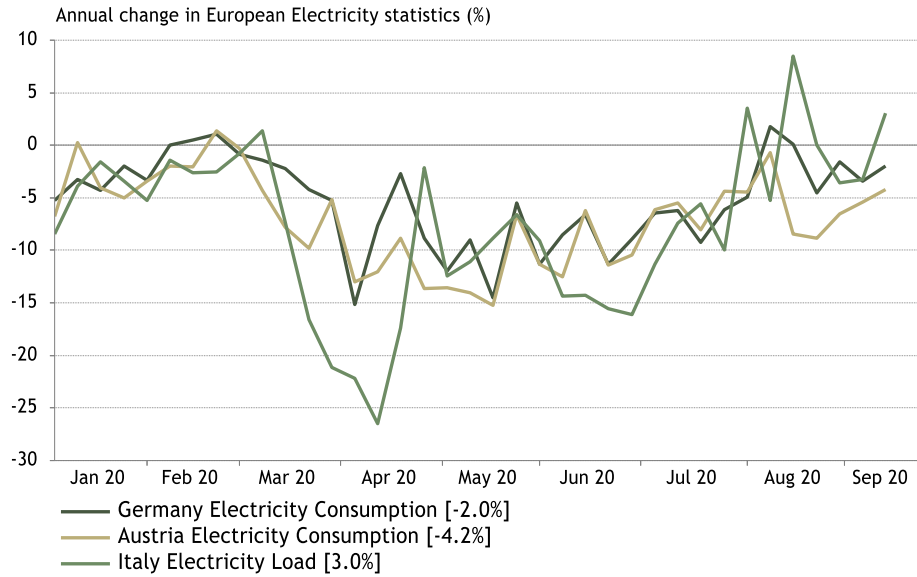


Chart EU14: Indeed Job Postings [Source: INDEED]

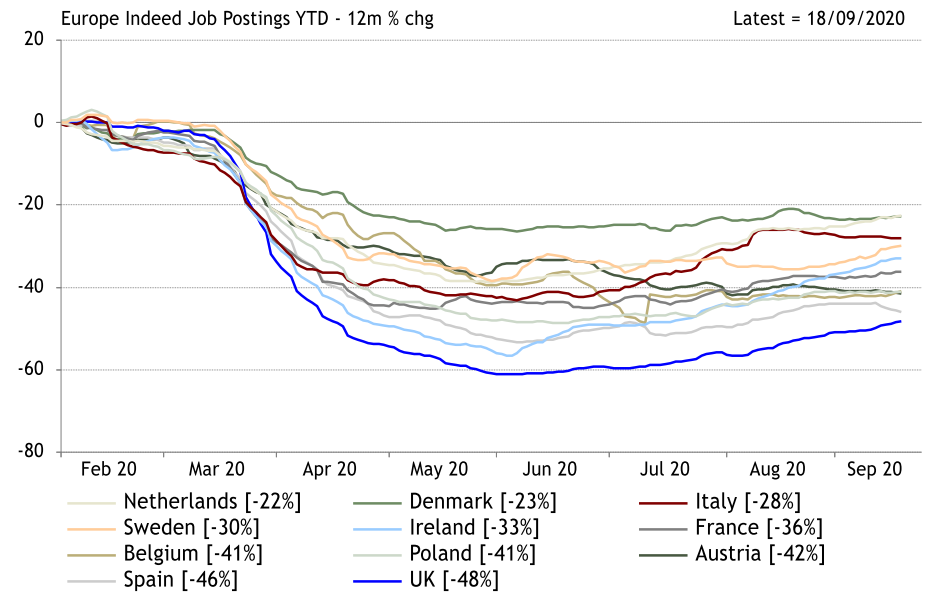


Chart EU15: Google Trends Consumer Search [Source: Google]

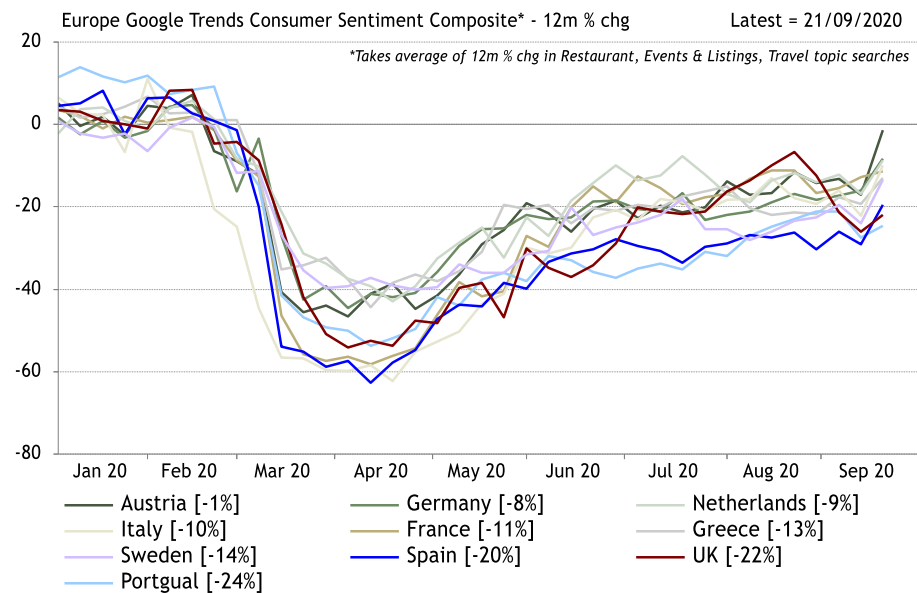


Chart EU16: Bundesbank Weekly Activity Index [Source: Bundesbank]



Europe

Chart EU17: Short-Term Rentals - New Bookings [Source: AirDNA]

Europe AirDNA Short-Term Rentals - New Bookings (inc. Airbnb & Vrbo) Latest = 28/08/2020

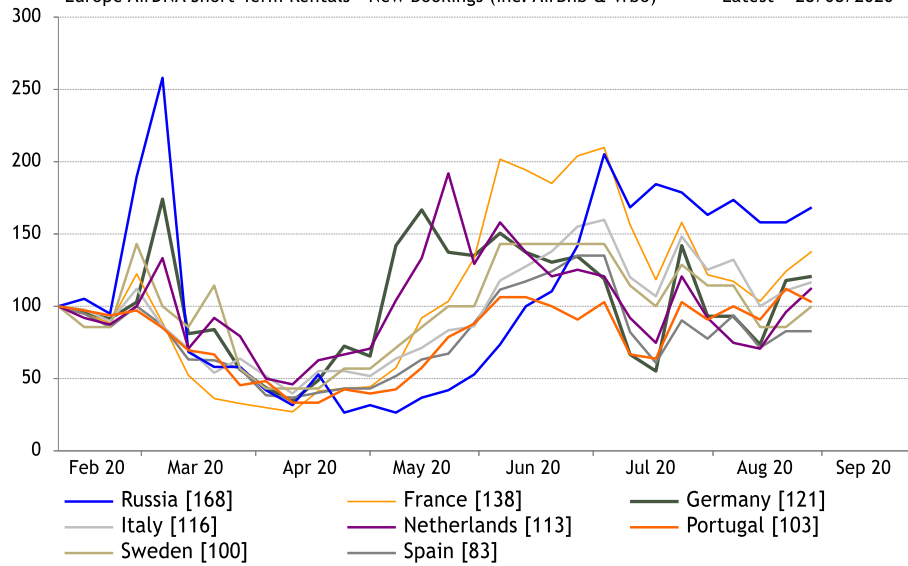


Chart EU18: ATM Transaction Volumes [Source: LINK]

Europe UK LINK ATM Transaction Volumes - 12m% chg Latest = 21/09/2020



Chart EU19: Truck Toll Mileage Index [Source: BAG & Destatis]

Europe - German Truck Toll Mileage Index (7-day average) Latest = 15/09/2020

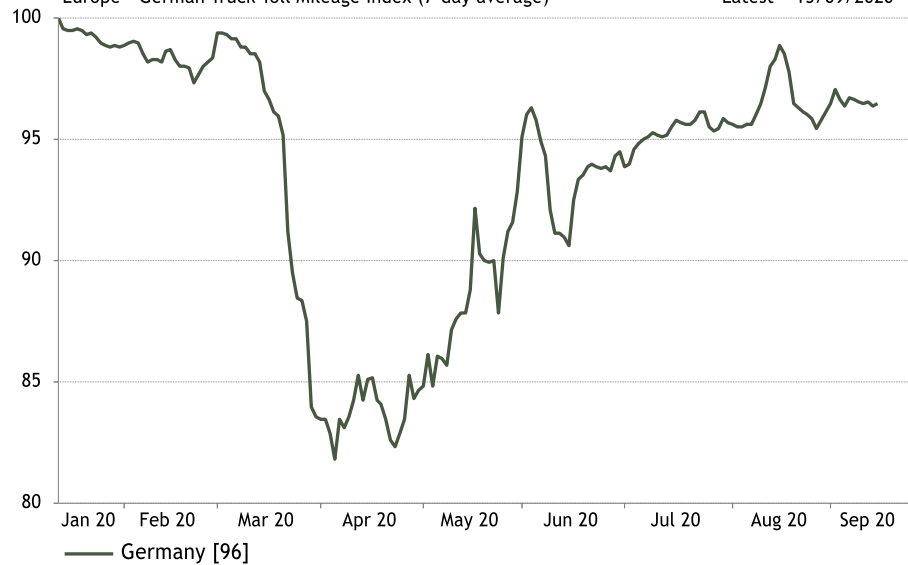
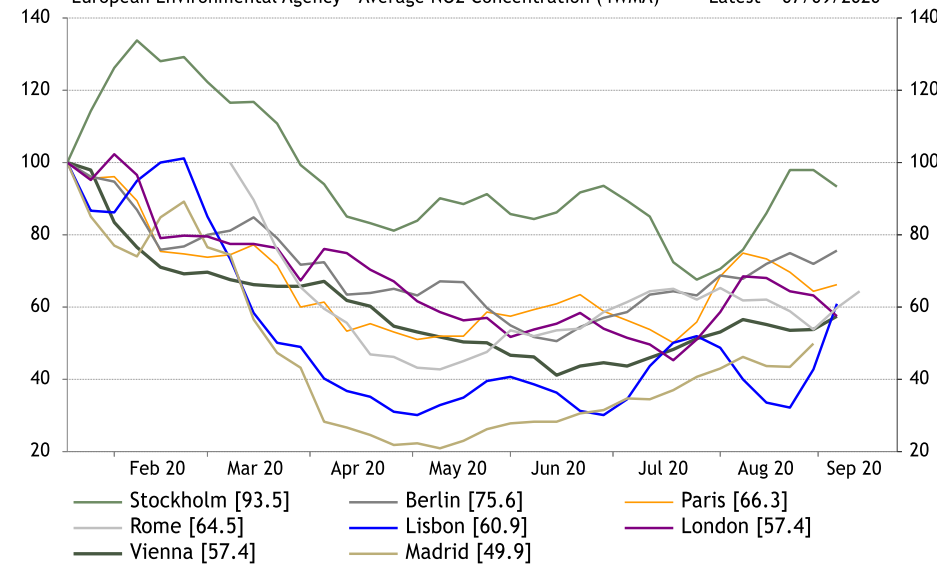


Chart EU20: Air Quality [Source: European Environmental Agency]

European Environmental Agency - Average NO2 Concentration (4WMA) Latest = 07/09/2020



Europe

Chart EU21: Online Job Postings [Source: Burning Glass Technologies]

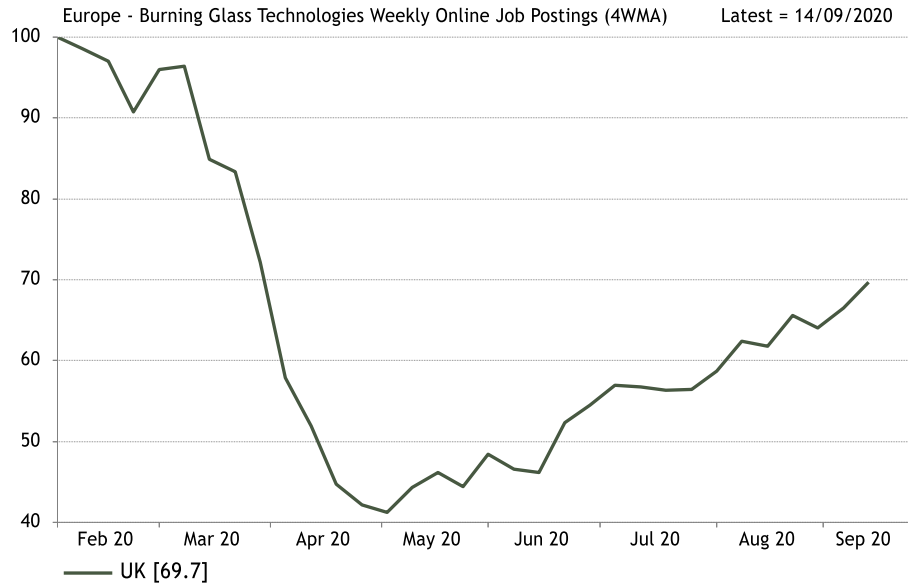


Chart EU22: OpenTable Reopened Restaurants [Source: OpenTable]

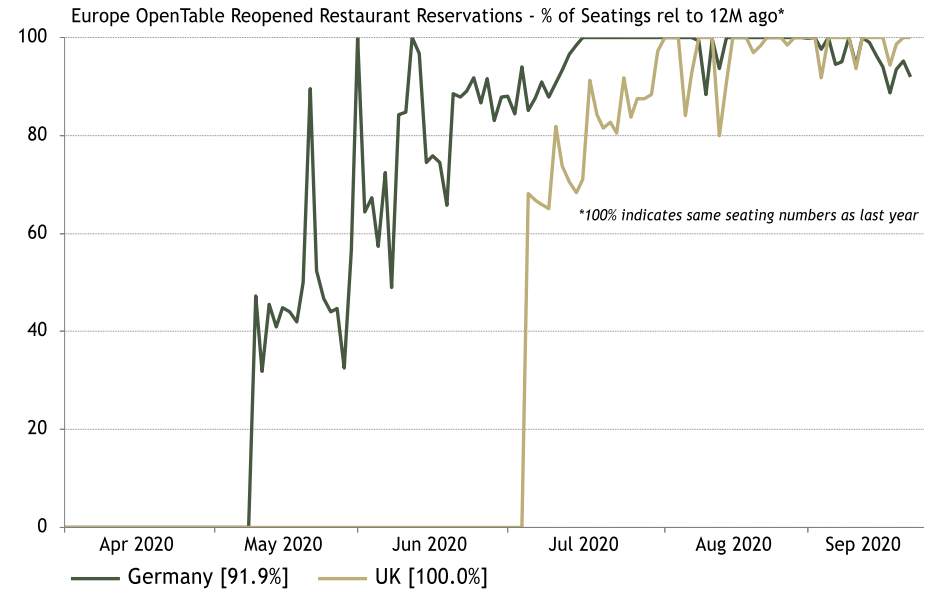


Chart EU23: Public Transport Usage [Source: www.moovit.com]

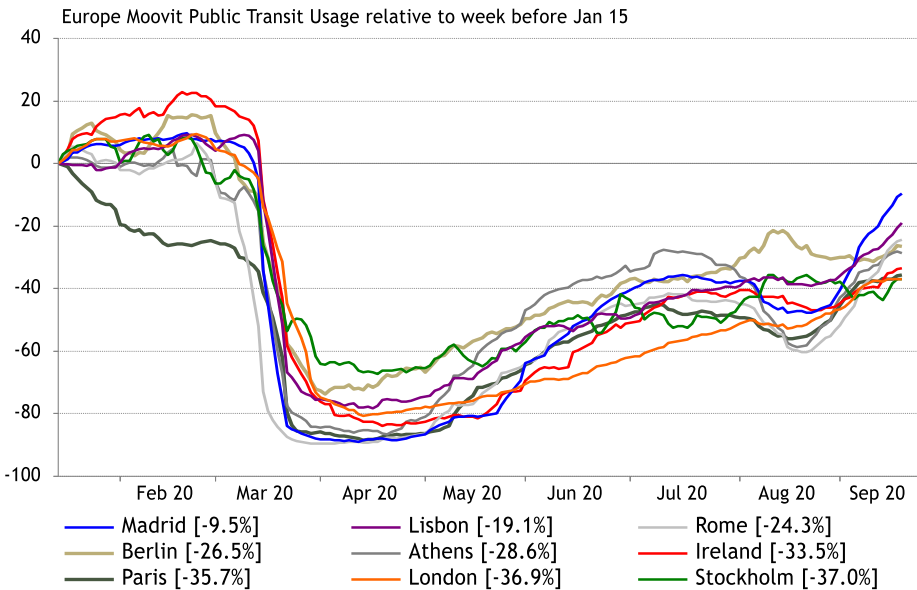
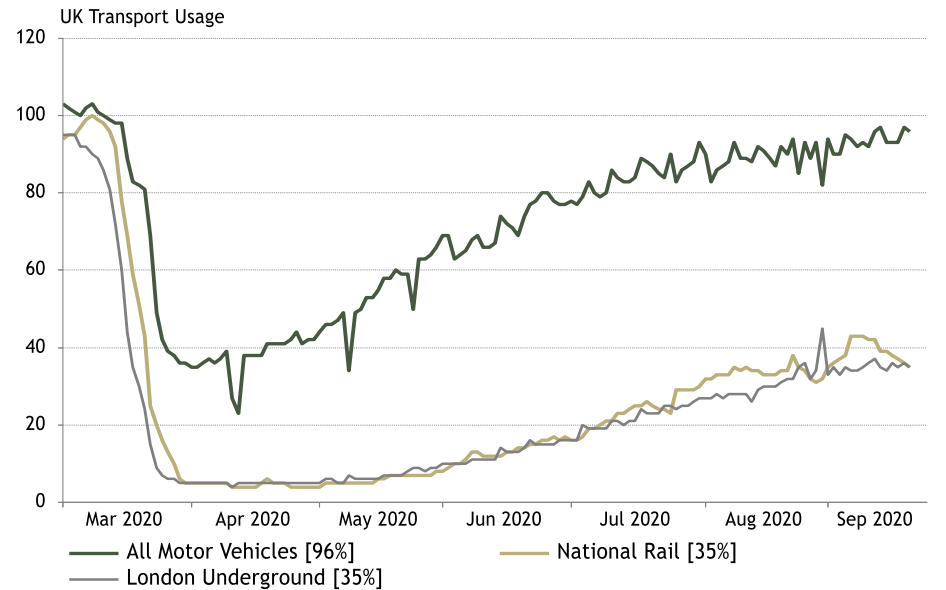


Chart EU24: UK Transport Usage [Source: UK Department for Transport]



Europe

Chart EU25: Flight Search Demand [Source: Skyscanner]

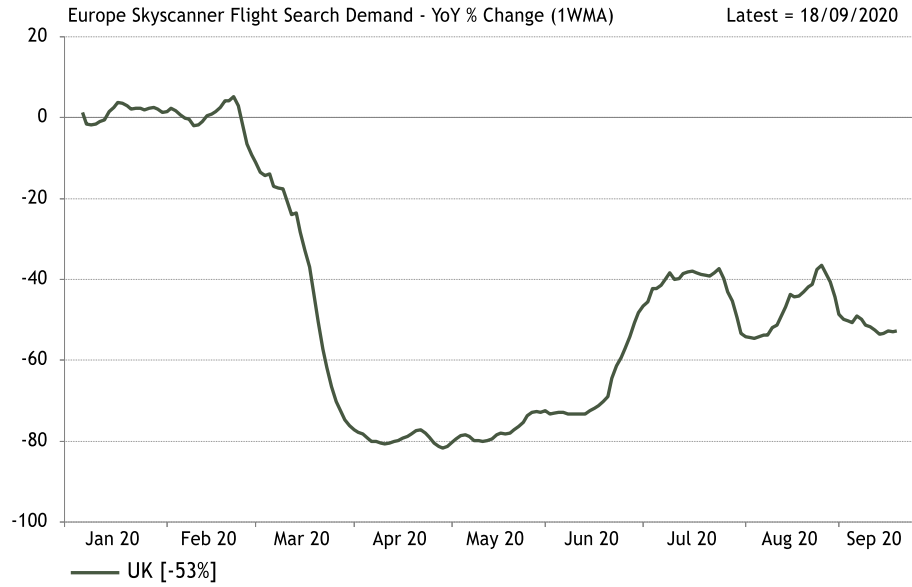


Chart EU26: Toll Road Traffic [Source: Atlantia]

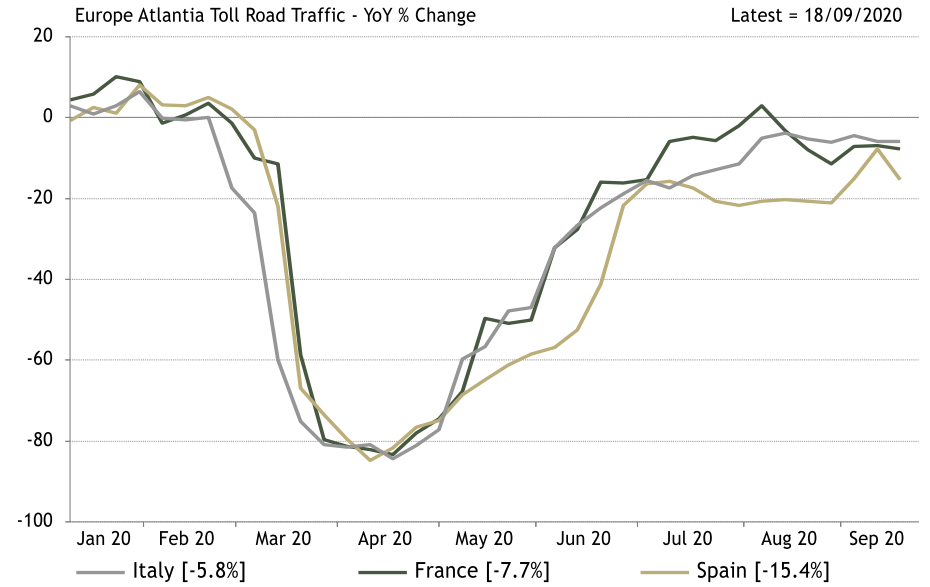
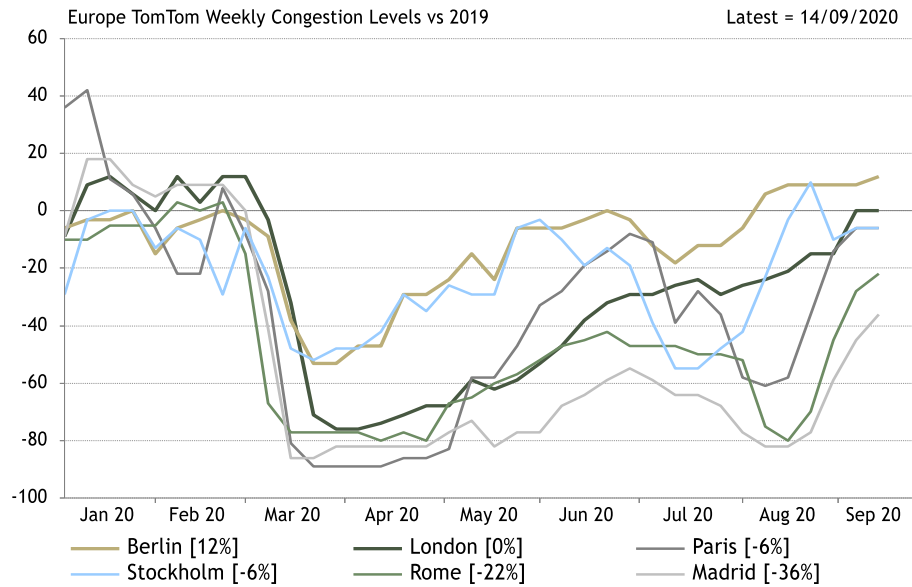


Chart 27: Traffic Congestion Levels [Source: TomTom]



Asia Pacific

Chart AP1: Cumulative Cases [Source: WHO]

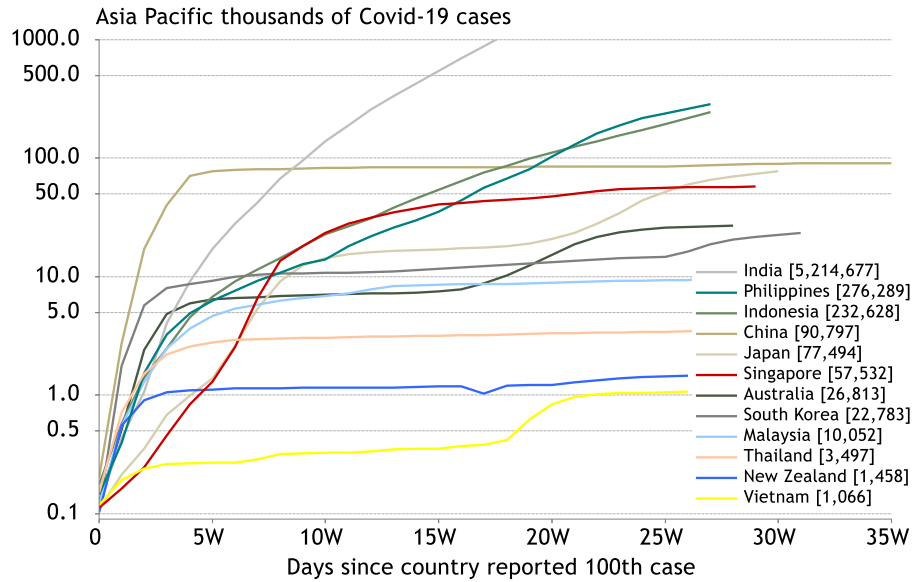


Chart AP2: Active vs Recovered vs Deaths [Source: Reuters]

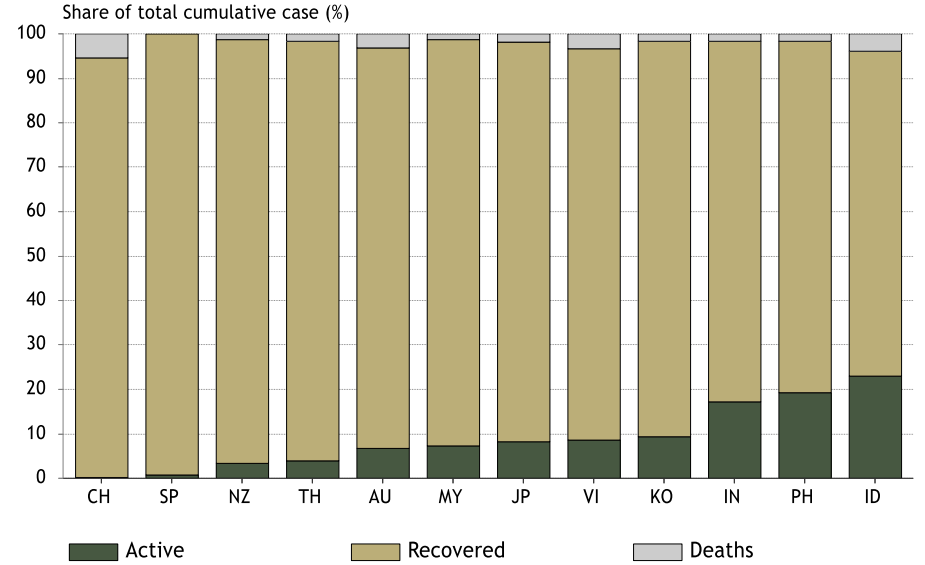


Chart AP3: Apple Mobility Data (Time Series) [Source: Apple]

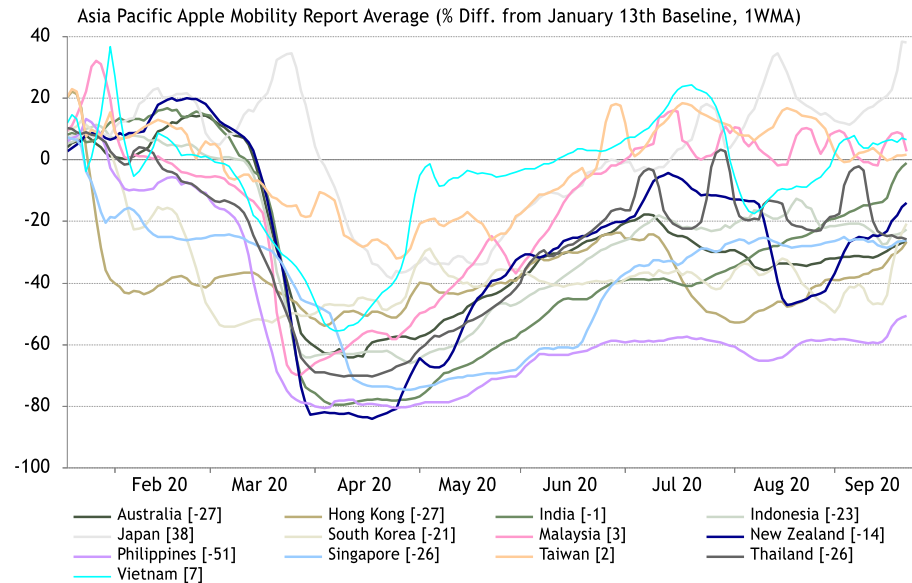
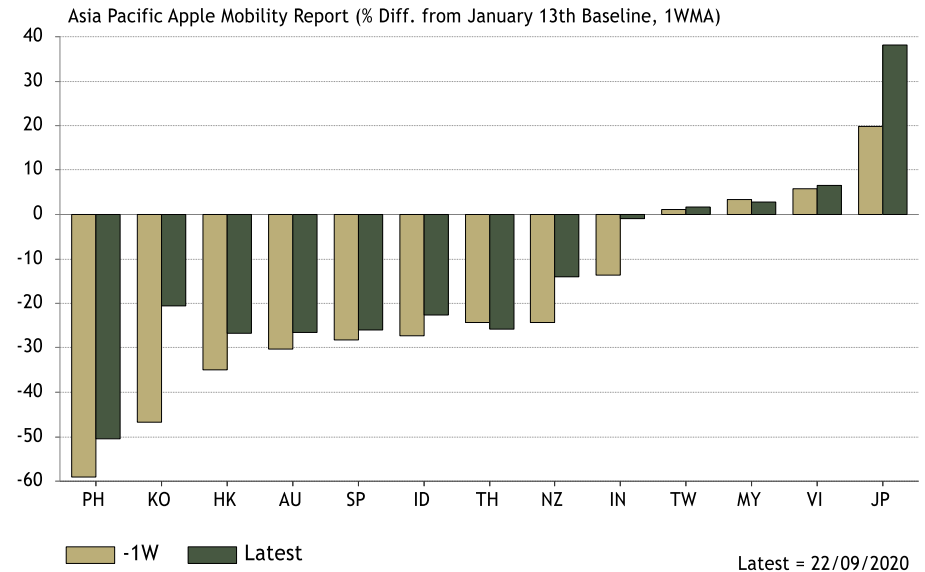


Chart AP4: Apple Mobility Data (Last Week vs Now) [Source: Apple]



Asia Pacific

Chart AP5: Google Mobility Data [Source: Google]

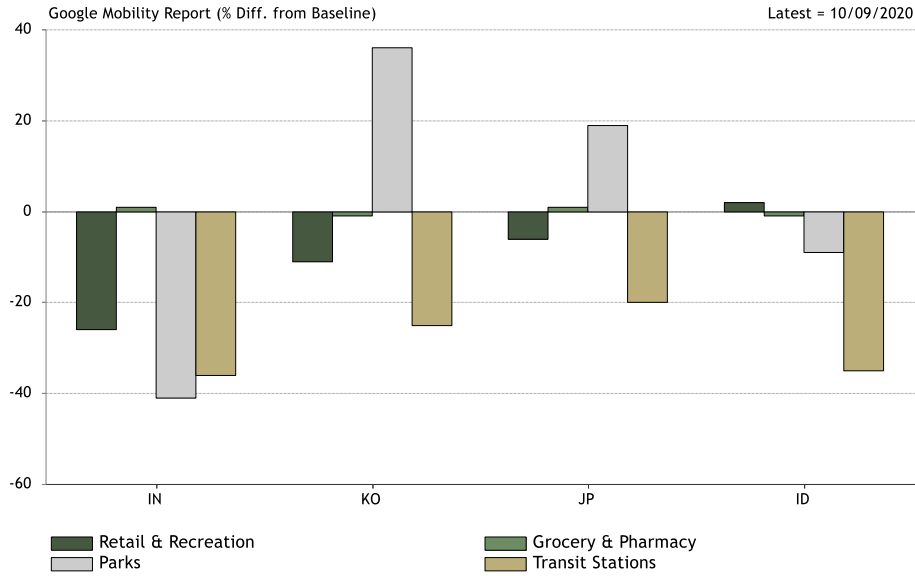


Chart AP6: OpenTable Restaurant Reservations [Source: OpenTable]

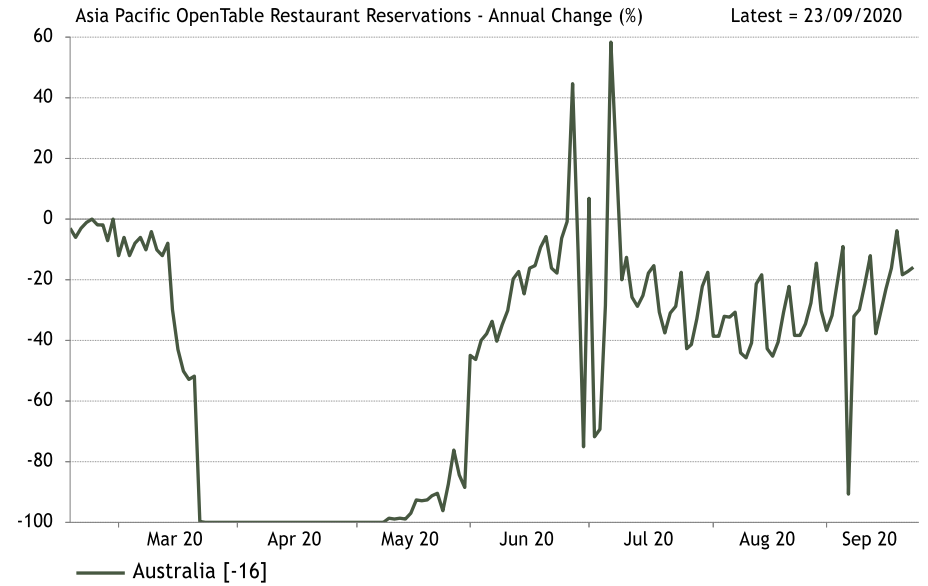


Chart AP7: Box Office Revenues [Source: BoxOfficeMojo]

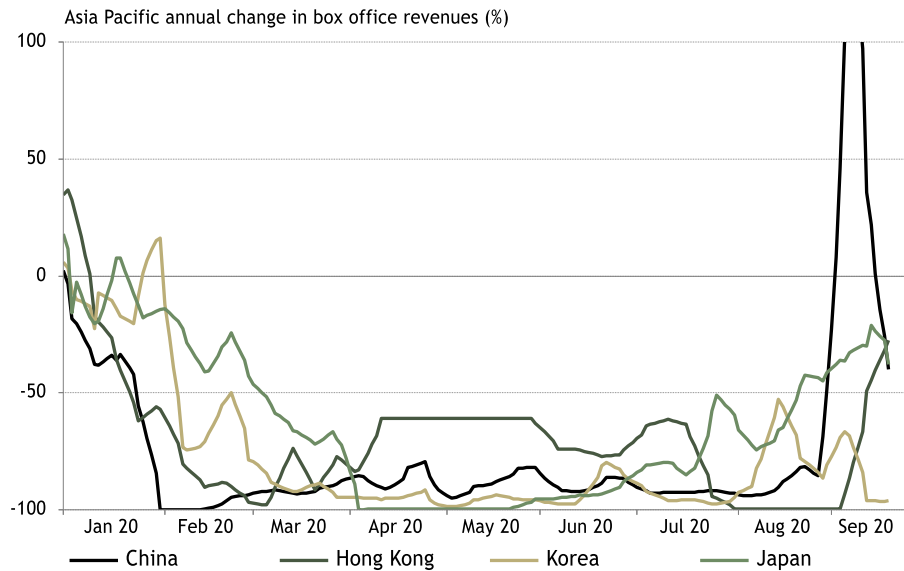
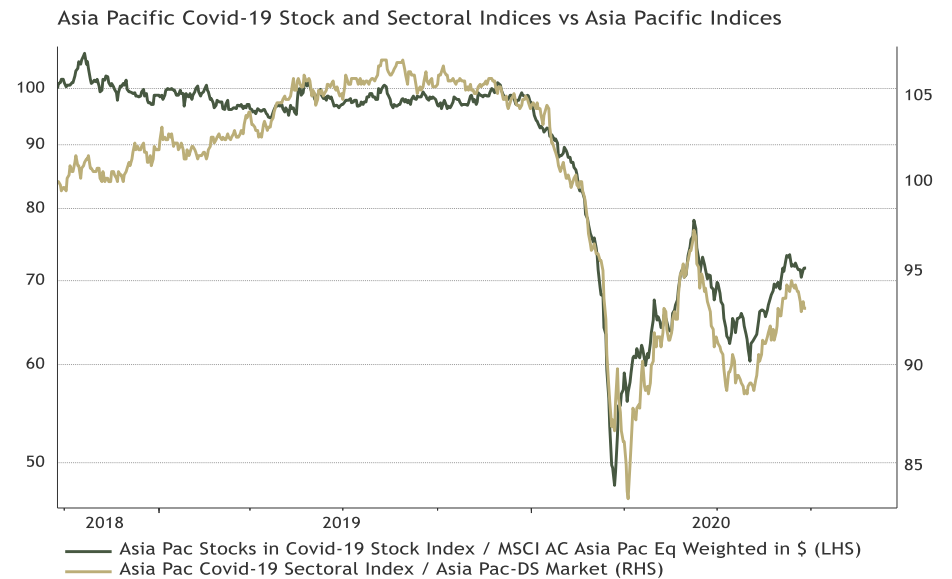


Chart AP8: ASR's Covid-19 Stock and Sectoral Indices [Source: Refinitiv, ASR]



Source: Refinitiv Datastream

Asia Pacific

Chart AP9: Citymapper Data (Time Series) [Source: CityMapper]

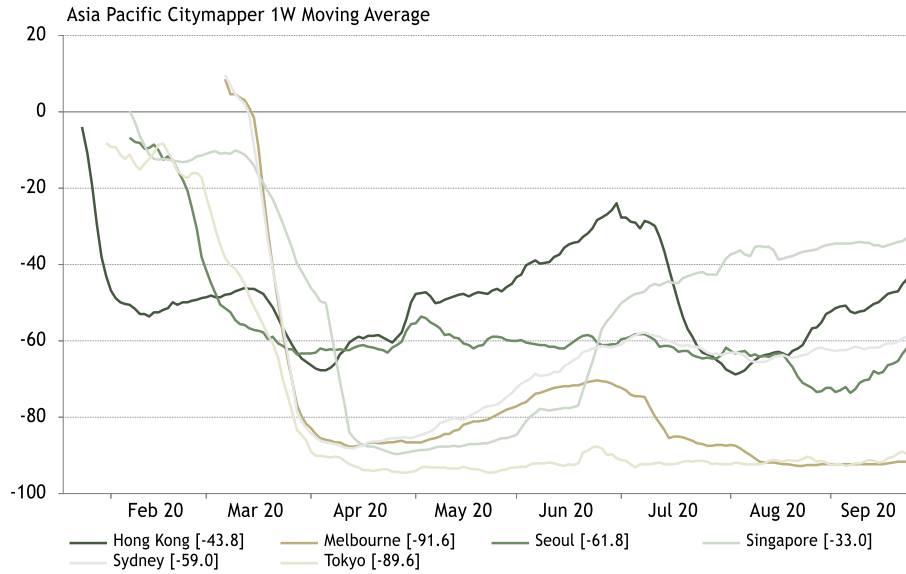


Chart AP10: Citymapper Data (Last Week vs Now) [Source: CityMapper]

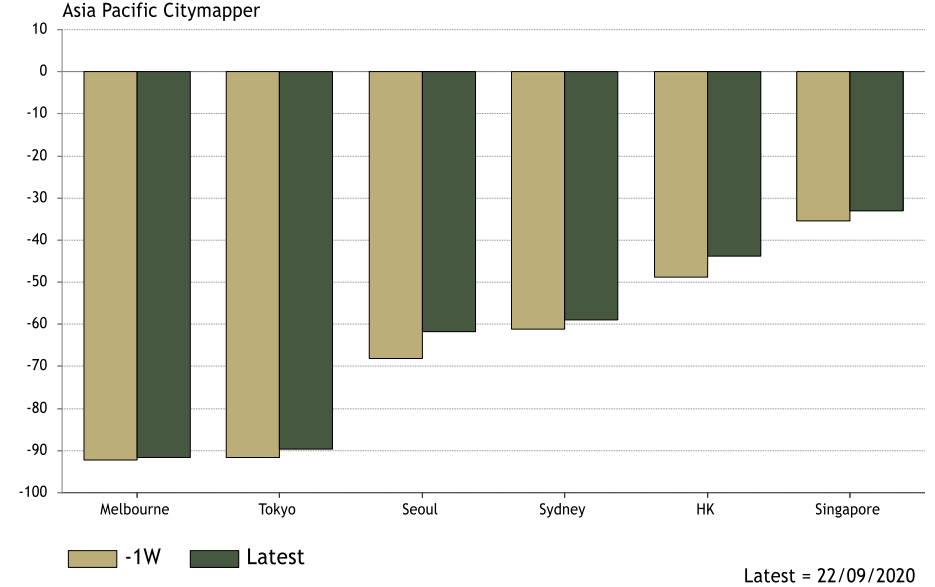


Chart AP11: Flightradar24 Flight Data [Source: FlightRadar24.com]

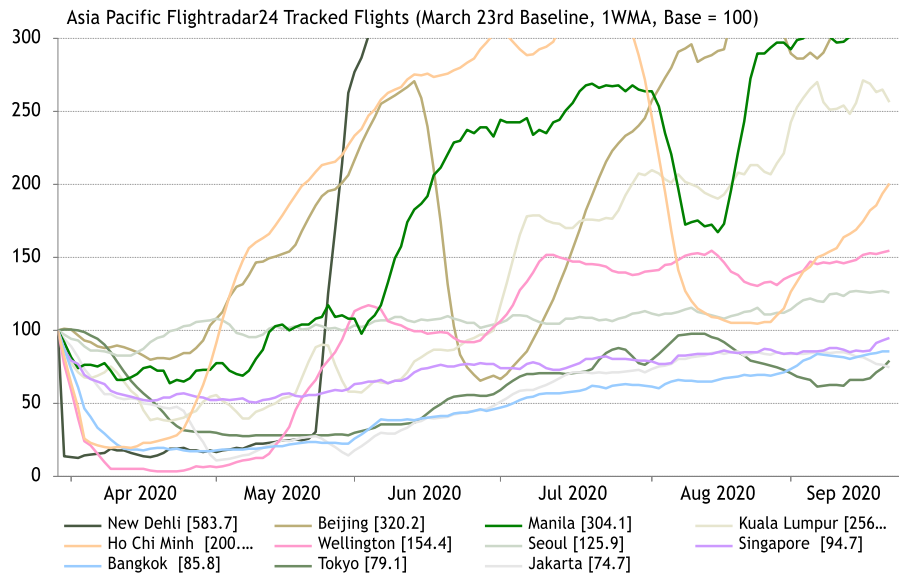
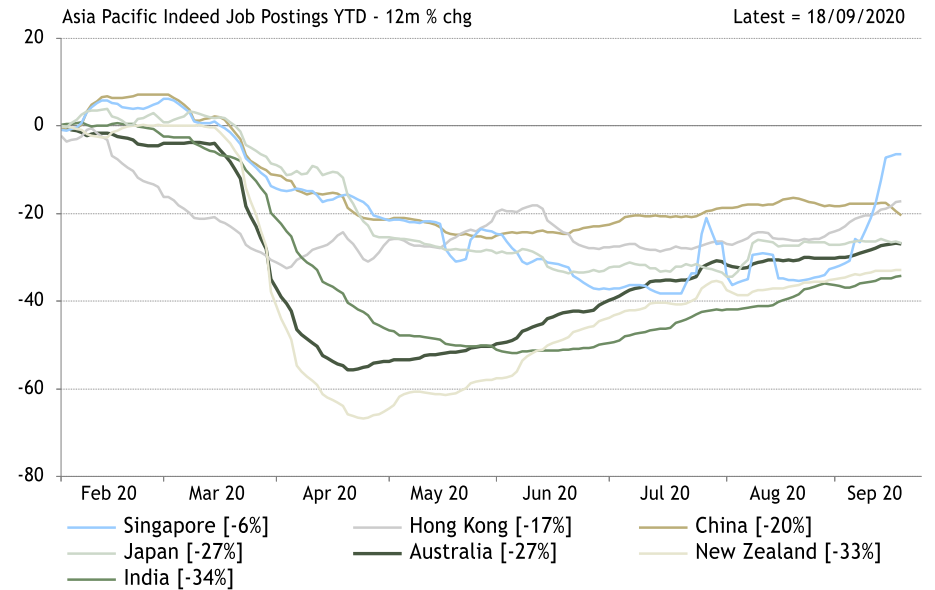


Chart AP12: Indeed Job Postings [Source: INDEED]



Asia Pacific

Chart AP13: Google Trends Consumer Search [Source: Google]

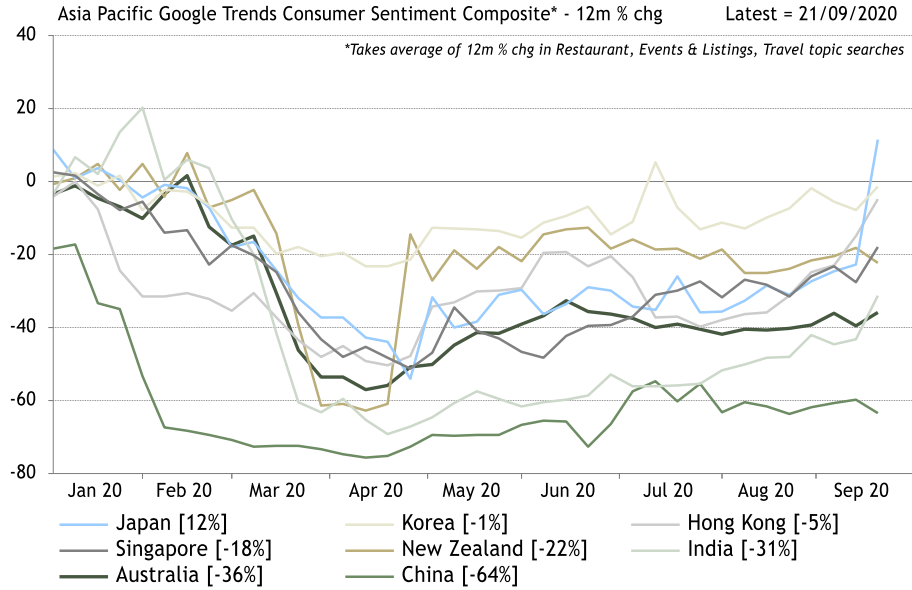


Chart AP14: Short-Term Rentals - New Bookings [Source: AirDNA]

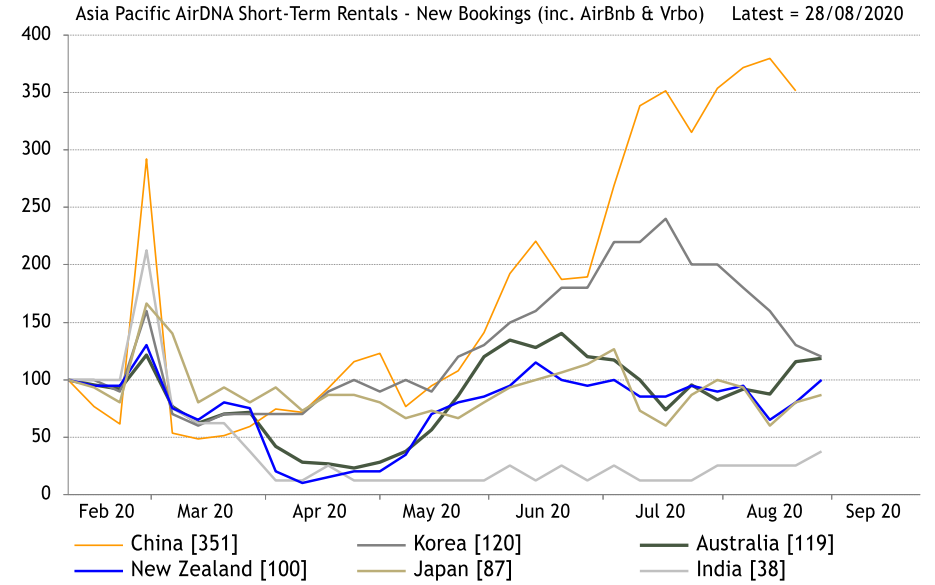


Chart AP15: Online Job Postings [Source: Burning Glass Technologies]

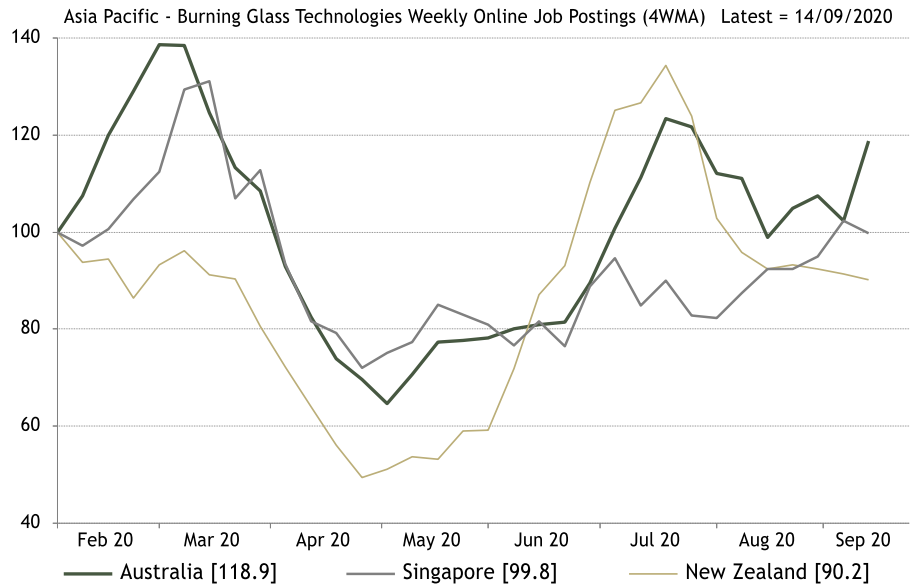
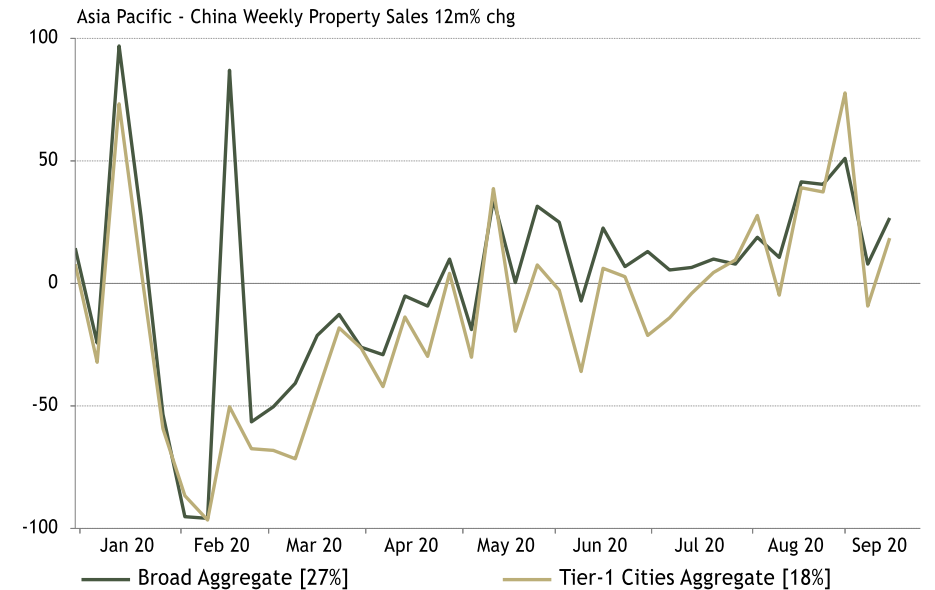


Chart AP16: China Weekly Property Sales [Source: Refinitiv Datastream]



Asia Pacific

Chart AP17: Public Transport Usage [Source: www.moovit.com]

Asia Pacific Moovit Public Transit Usage relative to week before Jan 15

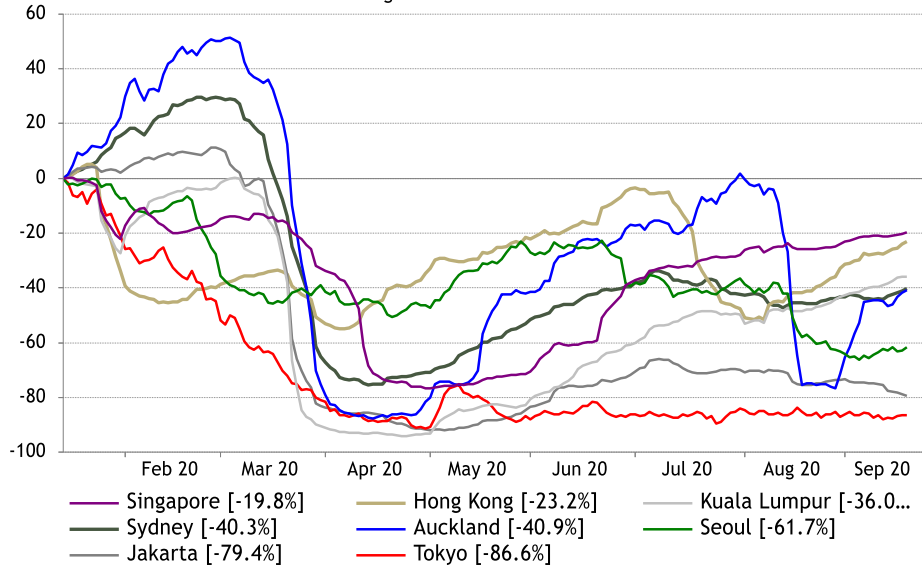


Chart AP18: Flight Search Demand [Source: Skyscanner]

Asia Pacific Skyscanner Flight Search Demand - YoY % Change (1WMA)

Latest = 18/09/2020

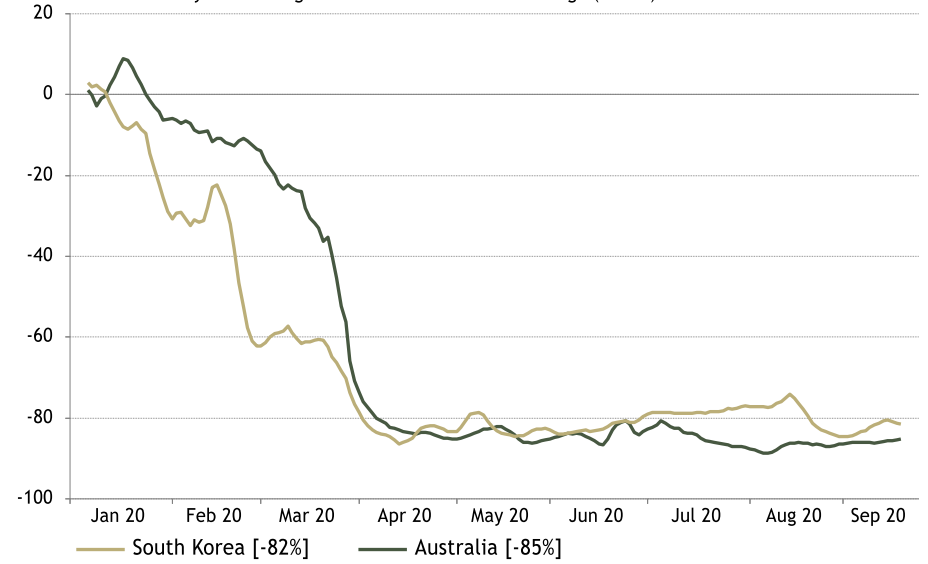
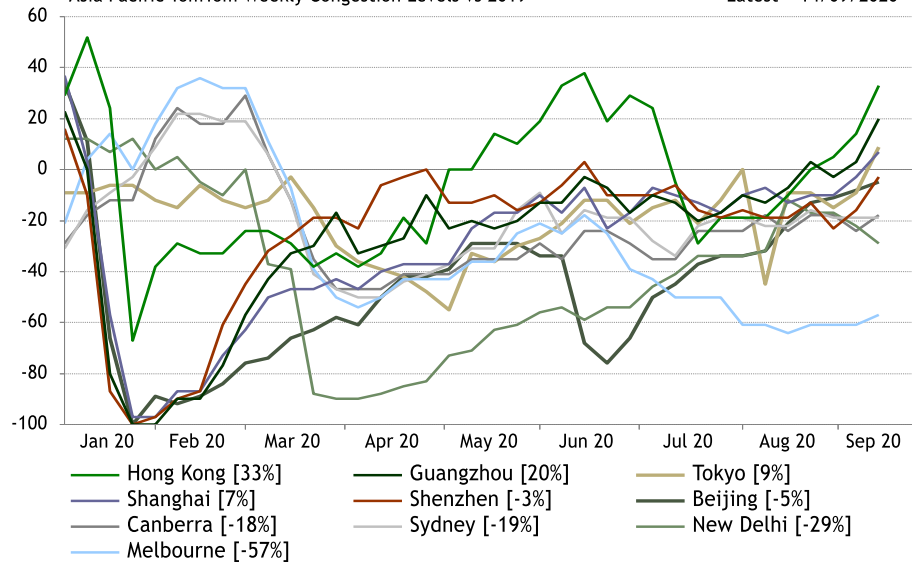


Chart AP19: Traffic Congestion Levels [Source: TomTom]

Asia Pacific TomTom Weekly Congestion Levels vs 2019

Latest = 14/09/2020



Global

Chart WD1: Flightradar24 Flight Data [Source: FlightRadar24.com]

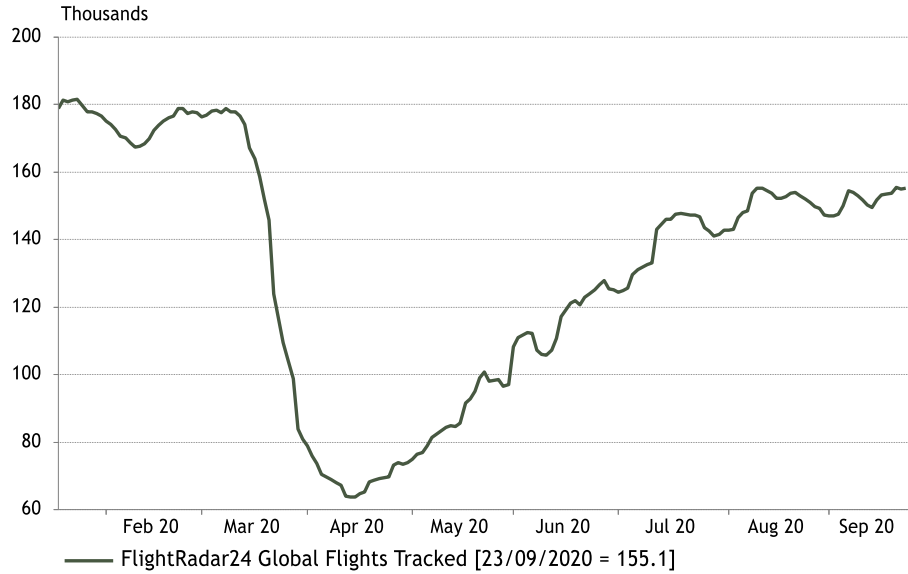


Chart WD2: ASR's Covid-19 Stock and Sectoral Indices [Source: Refinitiv, ASR]

Global Covid-19 Stock and Sectoral Indices vs Global Indices

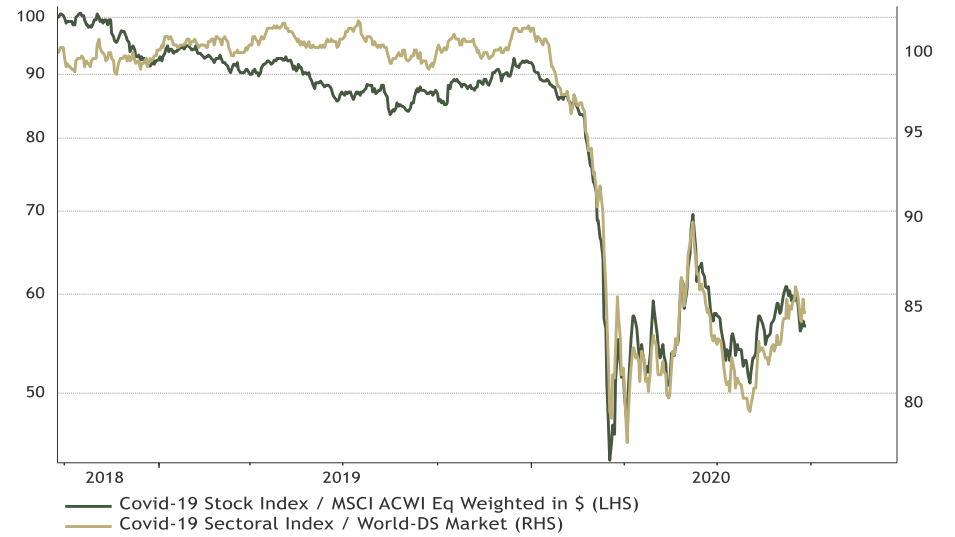


Chart WD3: ASR's Global Composite NewsFlow Indicator [Source: Factset, ASR]

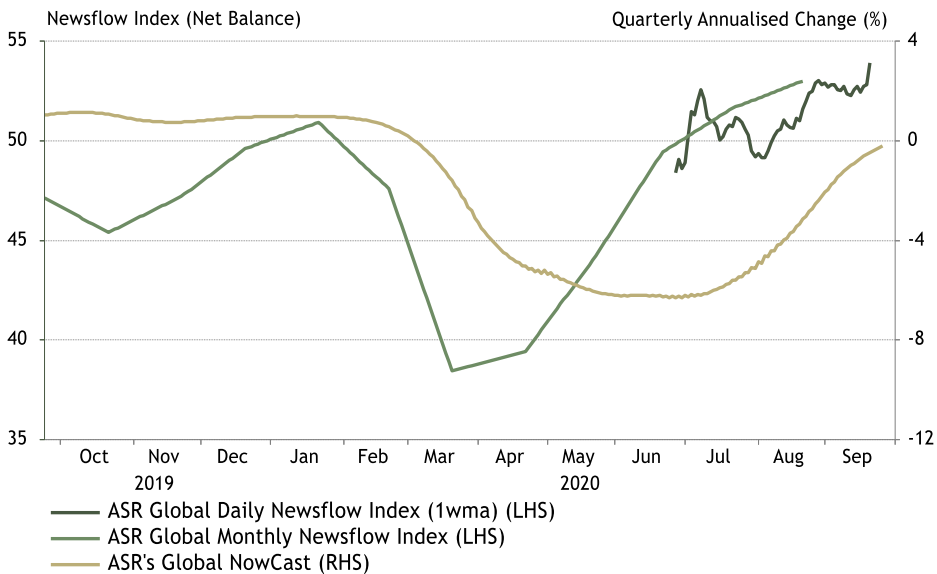
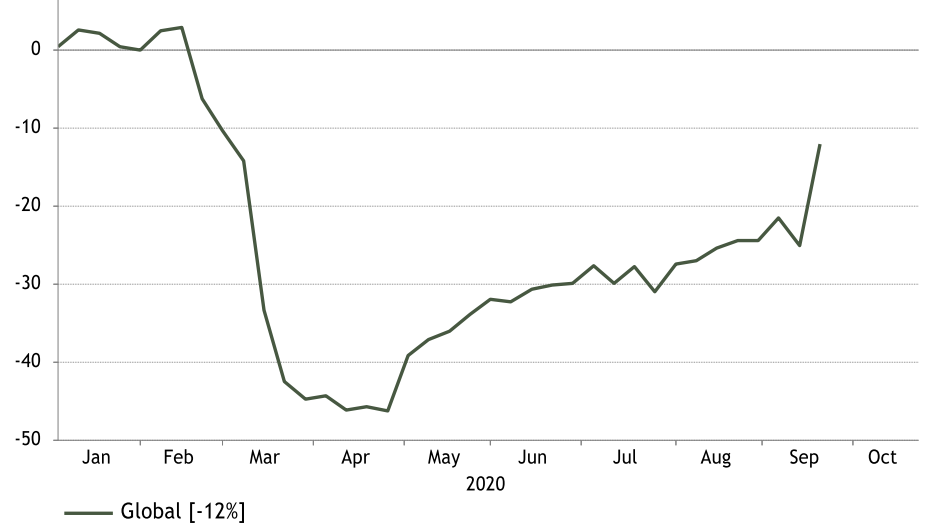


Chart WD4: Google Trends Consumer Search [Source: Google]

Global Google Trends Consumer Sentiment Composite* - 12m % chg

Latest = 21/09/2020

*Takes average of 12m % chg in Restaurant, Events & Listings, Travel topic searches



Global

Chart WD5: OpenTable Reopened Restaurants [Source: OpenTable]



Chart WD6: Travel Industry Recovery Index [Source: Skift Research]

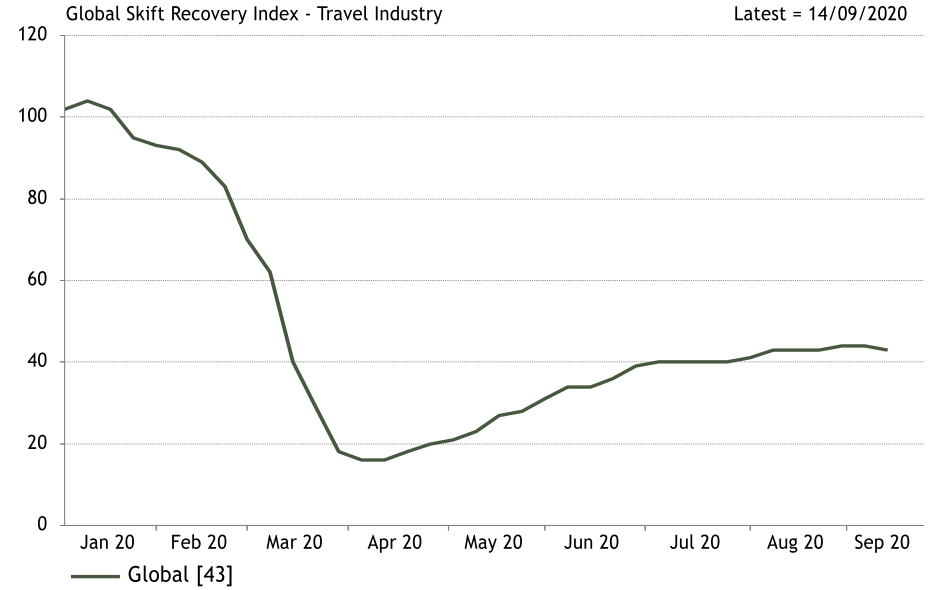


Chart WD7: Flight Search Demand [Source: Skyscanner]

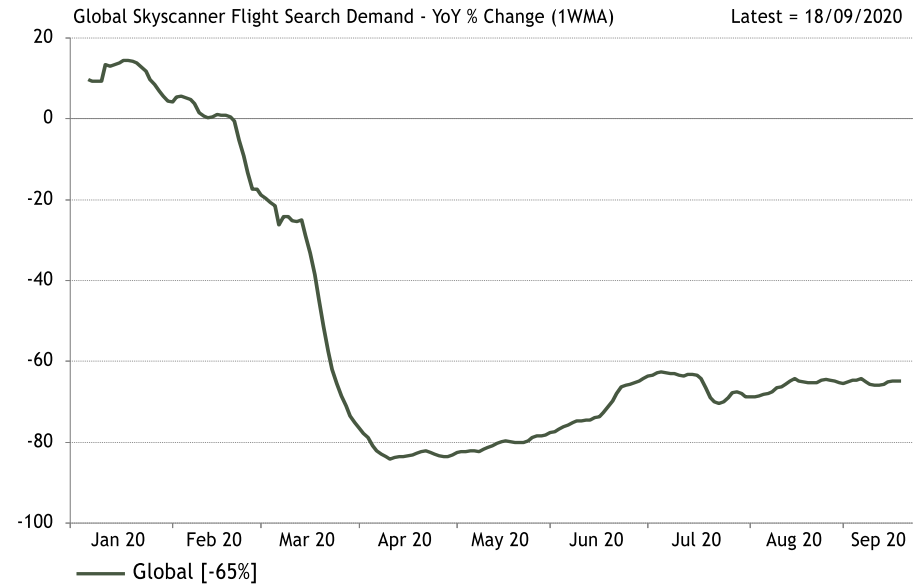
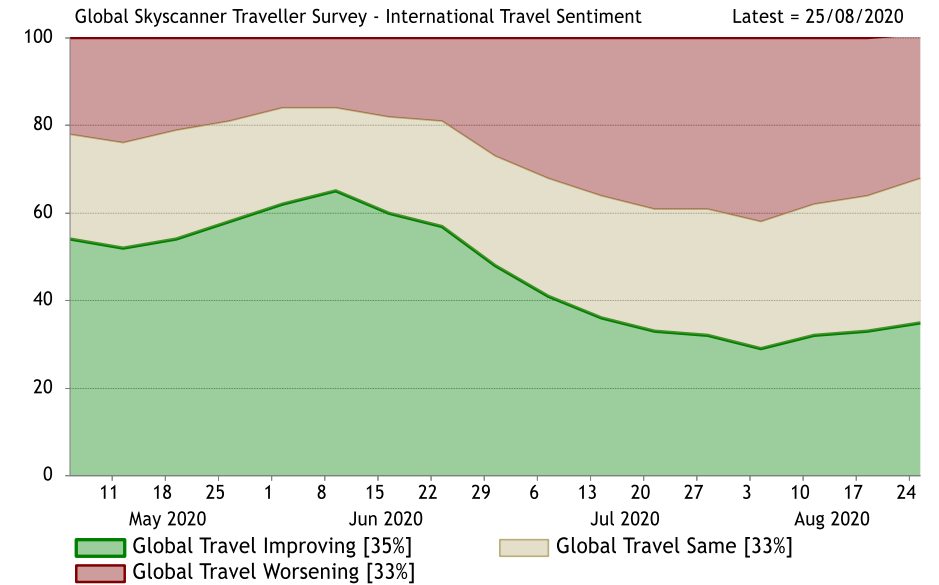


Chart WD8: Global Travel Survey [Source: Skyscanner]



Covid-19 Cases and Deaths Summary Table [Source: WHO, Reuters, World Bank]

Country	Region	Total Cases	Total Deaths	Deaths (% of Total Cases)	Cases (% of Total Pop)	Deaths (% of Total Pop)	Population
1 US	Americas	6,828,785	202,001	2.96	2.08	0.062	328,239,523
2 India	Asia Pacific	5,732,518	91,149	1.59	0.42	0.007	1,366,417,754
3 Brazil	Americas	4,591,604	138,977	3.03	2.18	0.066	211,049,527
4 Russia	Europe	1,128,836	19,948	1.77	0.78	0.014	144,373,535
5 Colombia	Americas	777,537	24,746	3.18	1.54	0.049	50,339,443
6 Peru	Americas	776,546	31,870	4.10	2.39	0.098	32,510,453
7 Mexico	Americas	705,263	74,949	10.63	0.55	0.059	127,575,529
8 Spain	Europe	693,556	31,034	4.47	1.47	0.066	47,076,781
9 Argentina	Americas	652,174	14,376	2.20	1.45	0.032	44,938,712
10 France	Europe	458,132	31,417	6.86	0.68	0.047	67,059,887
11 Chile	Americas	449,903	12,345	2.74	2.37	0.065	18,952,038
12 UK	Europe	409,733	41,862	10.22	0.61	0.063	66,834,405
13 Turkey	Europe	308,069	7,711	2.50	0.37	0.009	83,429,615
14 Italy	Europe	302,537	35,758	11.82	0.50	0.059	60,297,396
15 Philippines	Asia Pacific	294,591	5,127	1.74	0.27	0.005	108,116,615
16 Germany	Europe	278,070	9,392	3.38	0.33	0.011	83,132,799
17 Indonesia	Asia Pacific	257,388	10,105	3.93	0.10	0.004	270,625,568
18 Ukraine	Europe	188,106	3,757	2.00	0.42	0.008	44,385,155
19 Canada	Americas	146,663	9,243	6.30	0.39	0.025	37,589,262
20 Bolivia	Americas	131,453	7,731	5.88	1.14	0.067	11,513,100
21 Ecuador	Americas	129,982	11,189	8.61	0.75	0.064	17,373,662
22 Romania	Europe	116,415	4,591	3.94	0.60	0.024	19,356,544
23 Belgium	Europe	106,793	9,959	9.33	0.93	0.087	11,484,055
24 Netherlands	Europe	100,493	6,296	6.27	0.58	0.036	17,332,850
25 China	Asia Pacific	90,918	4,634	5.10	0.01	0.000	1,397,715,000
26 Sweden	Europe	89,756	5,865	6.53	0.87	0.057	10,285,453
27 Poland	Europe	81,673	2,369	2.90	0.22	0.006	37,970,874
28 Japan	Asia Pacific	80,041	1,550	1.94	0.06	0.001	126,264,931
29 Portugal	Europe	70,465	1,931	2.74	0.69	0.019	10,269,417
30 Venezuela	Americas	68,453	574	0.84	0.24	0.002	28,515,829
31 Czech Republic	Europe	55,464	555	1.00	0.52	0.005	10,669,709
32 Switzerland	Europe	50,984	1,770	3.47	0.59	0.021	8,574,832
33 Austria	Europe	40,558	763	1.88	0.46	0.009	8,877,067
34 Ireland	Europe	33,675	1,794	5.33	0.68	0.036	4,941,444
35 Australia	Asia Pacific	26,973	859	3.18	0.11	0.003	25,364,307
36 Denmark	Europe	24,357	645	2.65	0.42	0.011	5,818,553
37 South Korea	Asia Pacific	23,341	393	1.68	0.05	0.001	51,709,098
38 Hungary	Europe	21,200	709	3.34	0.22	0.007	9,769,949
39 Greece	Europe	16,286	357	2.19	0.15	0.003	10,716,322
40 Croatia	Europe	15,340	261	1.70	0.38	0.006	4,067,500
41 Singapore	Asia Pacific	14,795	302	2.04	0.09	0.002	16,296,364
42 Norway	Europe	13,152	270	2.05	0.25	0.005	5,347,896
43 Malaysia	Asia Pacific	10,505	133	1.27	0.03	0.000	31,949,777
44 Finland	Europe	9,288	343	3.69	0.17	0.006	5,520,314
45 Hong Kong	Asia Pacific	5,056	103	2.04	0.07	0.001	7,507,400
46 Thailand	Asia Pacific	3,516	59	1.68	0.01	0.000	69,625,582
47 Uruguay	Americas	1,934	47	2.43	0.06	0.001	3,461,734
48 Cyprus	Europe	1,654	22	1.33	0.14	0.002	1,198,575
49 New Zealand	Asia Pacific	1,471	25	1.70	0.03	0.001	4,917,000
50 Vietnam	Asia Pacific	1,069	35	3.27	0.00	0.000	96,462,106
World	Global	31,798,308	977,348	3.07	0.41	0.013	7,673,533,972

This research report is issued by Absolute Strategy Research Ltd, which is authorised and regulated by the Financial Conduct Authority ("FCA"). Absolute Strategy Research Services Inc. is registered as an investment adviser with the US SEC, and is responsible for all communications and dealings with, and only with, US persons. The report is intended only for investors who are Eligible Counterparties or Professional Clients, as defined by MIFID and the FCA, and may not be distributed to Retail Clients.

Absolute Strategy Research Ltd does not solicit any action based upon this report, which is not to be construed as an invitation to buy or sell any security. This report is not intended to provide personal investment advice and it does not take into account the investment objectives, financial situation and the particular needs of any particular person who may read this report.

This research report provides general information only. The information contained was obtained from sources that we believe to be reliable but we do not guarantee that it is accurate or complete, and it should not be relied upon as such. Opinions expressed are our current opinions as of the original publication date appearing on this material only and the information, including the opinions contained herein, are subject to change without notice.

This research report may not be redistributed, retransmitted or disclosed in whole or in part, without the express written permission of Absolute Strategy Research Ltd.

© Absolute Strategy Research Ltd 2020. All rights reserved.